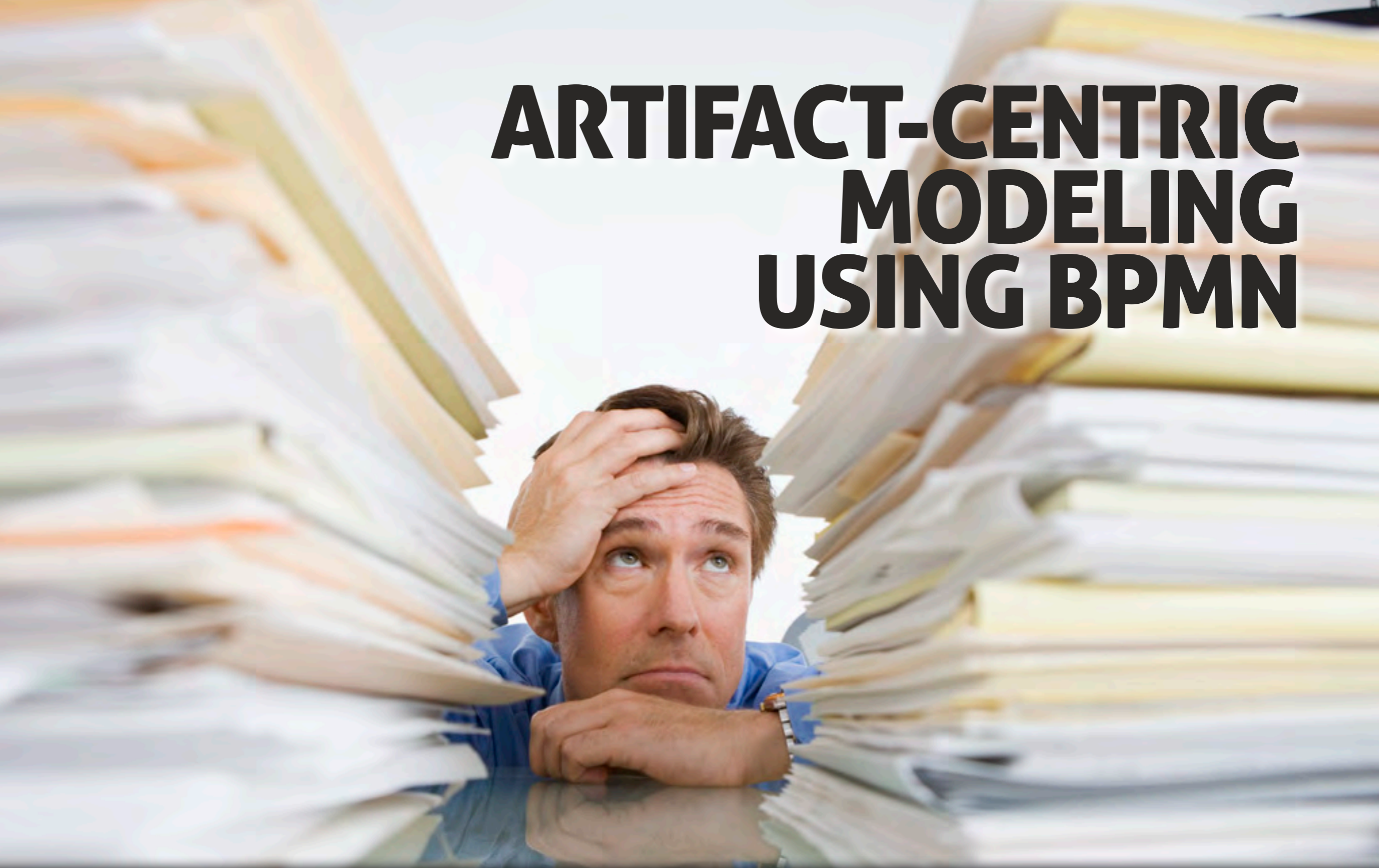


ARTIFACT-CENTRIC MODELING USING BPMN



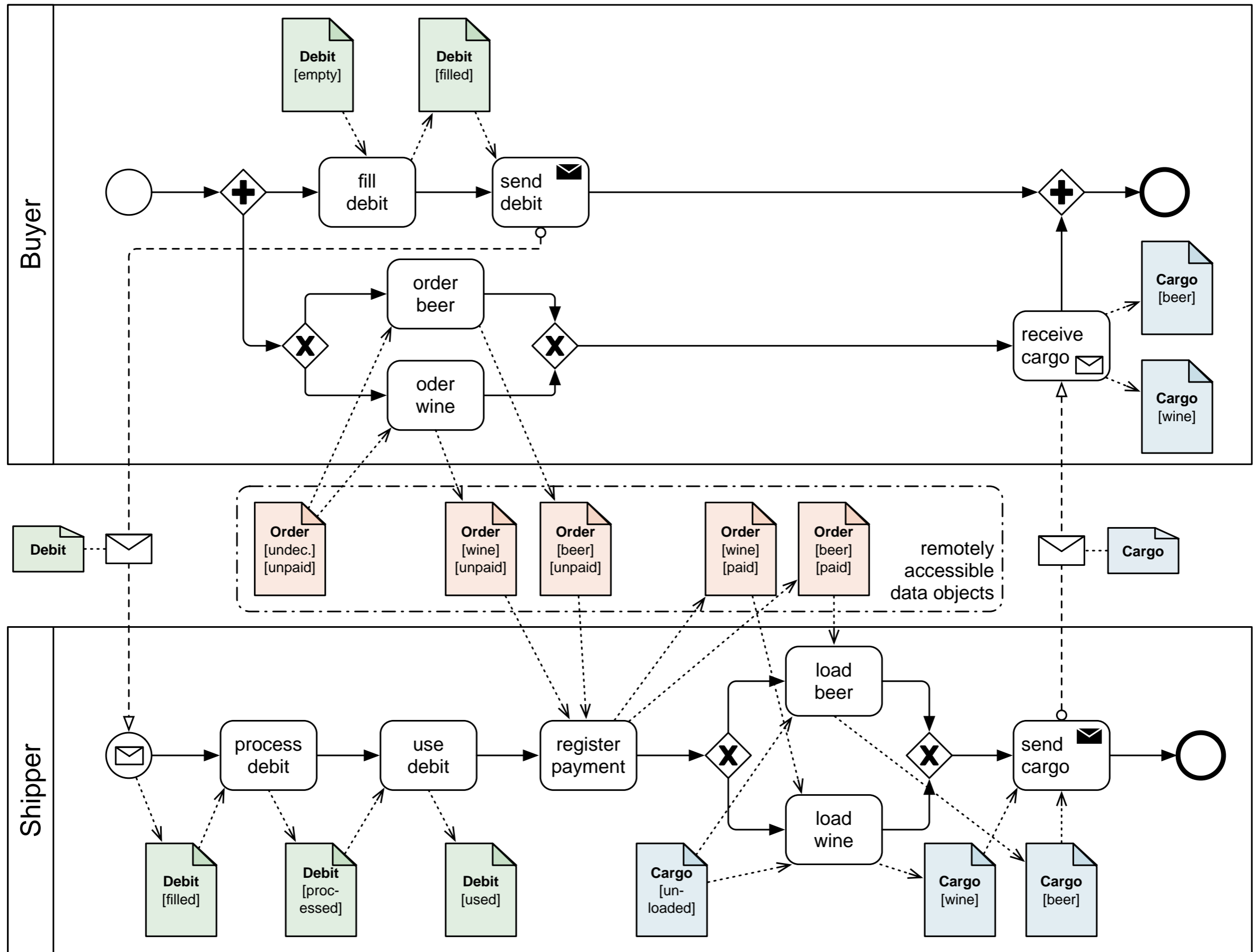
Niels Lohmann
Martin Nyolt

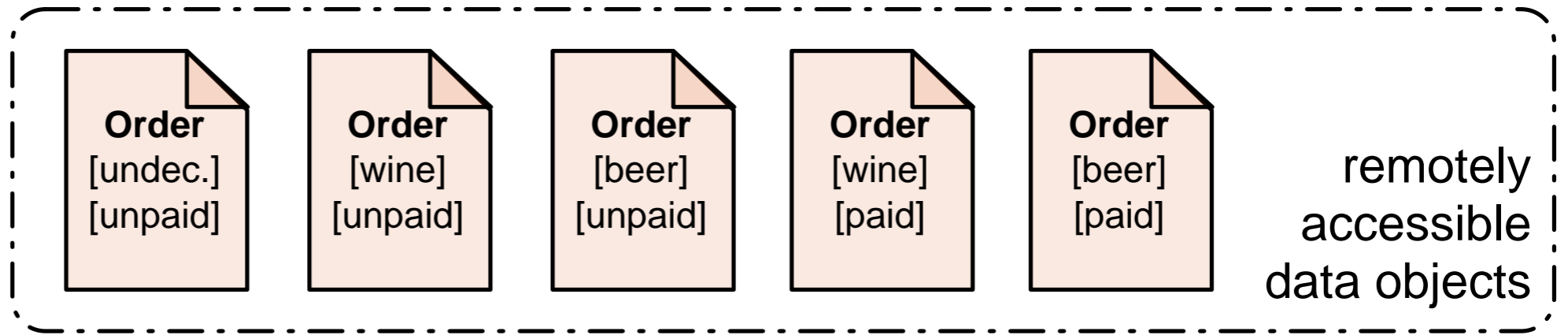
Universität
Rostock



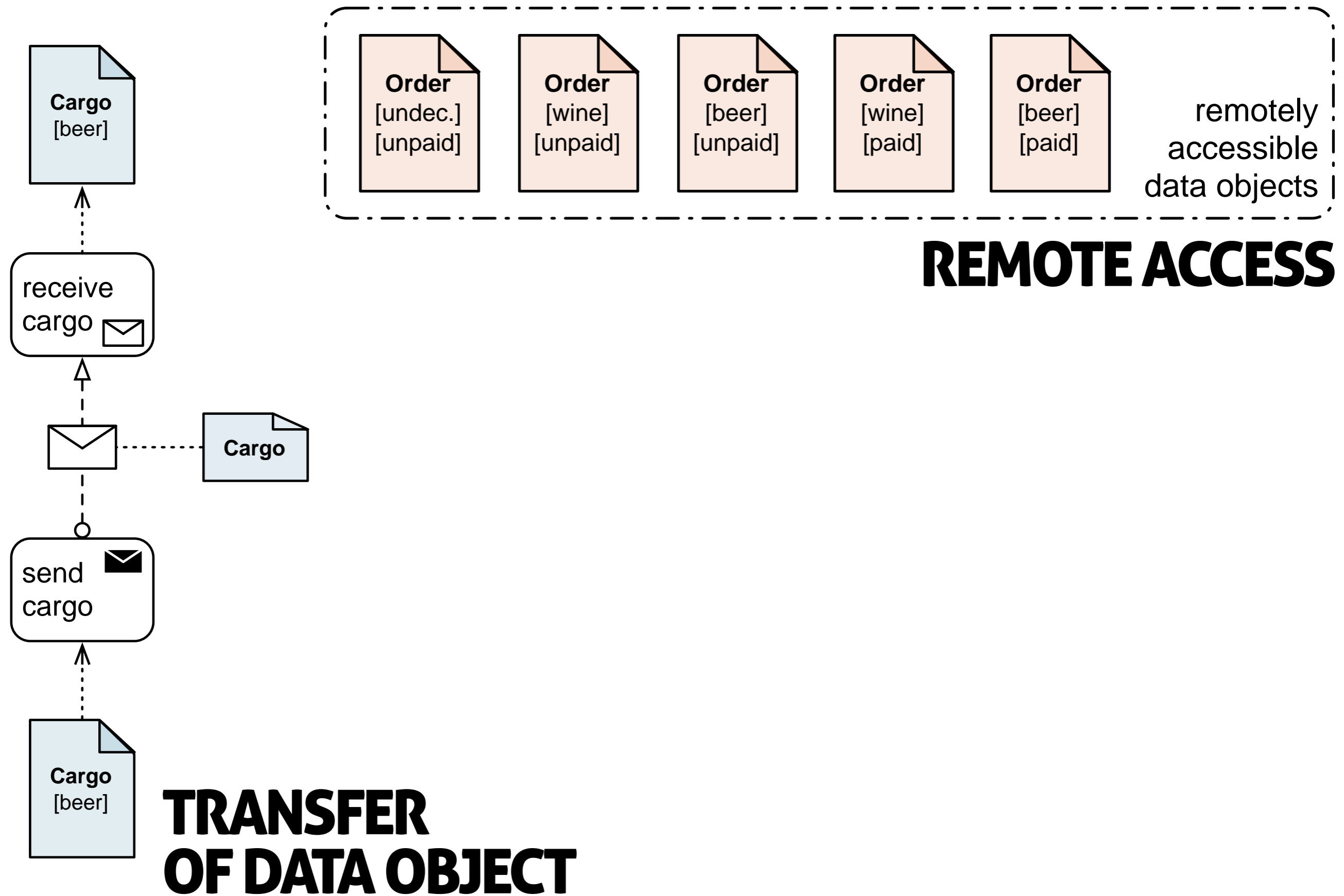
Traditio et Innovatio

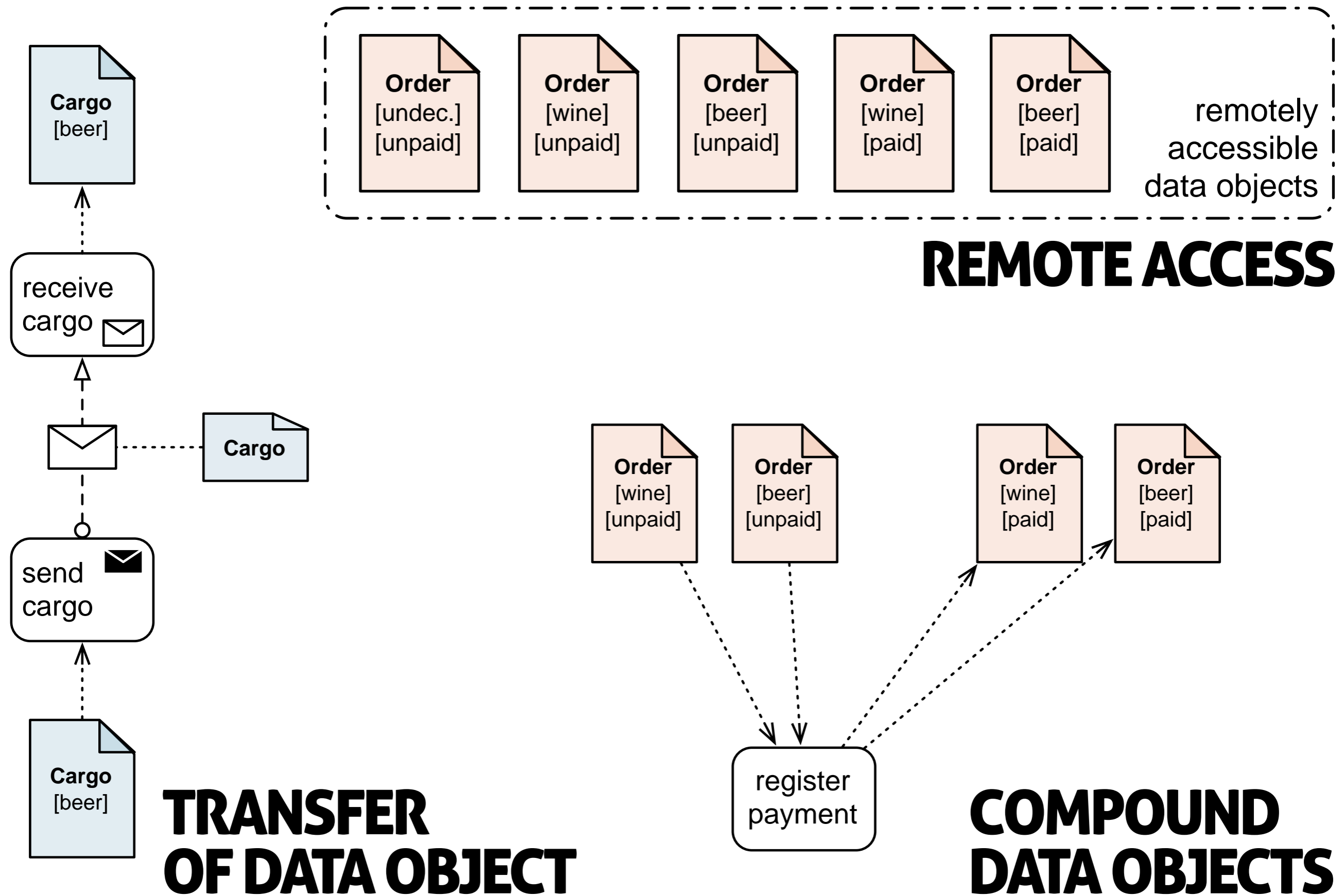
DATA IN BPMN





REMOTE ACCESS









“NOUN-CENTRIC”





**“NOUN-CENTRIC”
DECLARATIVE**



CREATED
ACCEPTED
REJECTED



RECEIVED
CONFIRMED
FILED

"NOUN-CENTRIC" DECLARATIVE

SENT
PAID



ASSEMBLED
PACKAGED
SHIPPED

CREATED
ACCEPTED
REJECTED



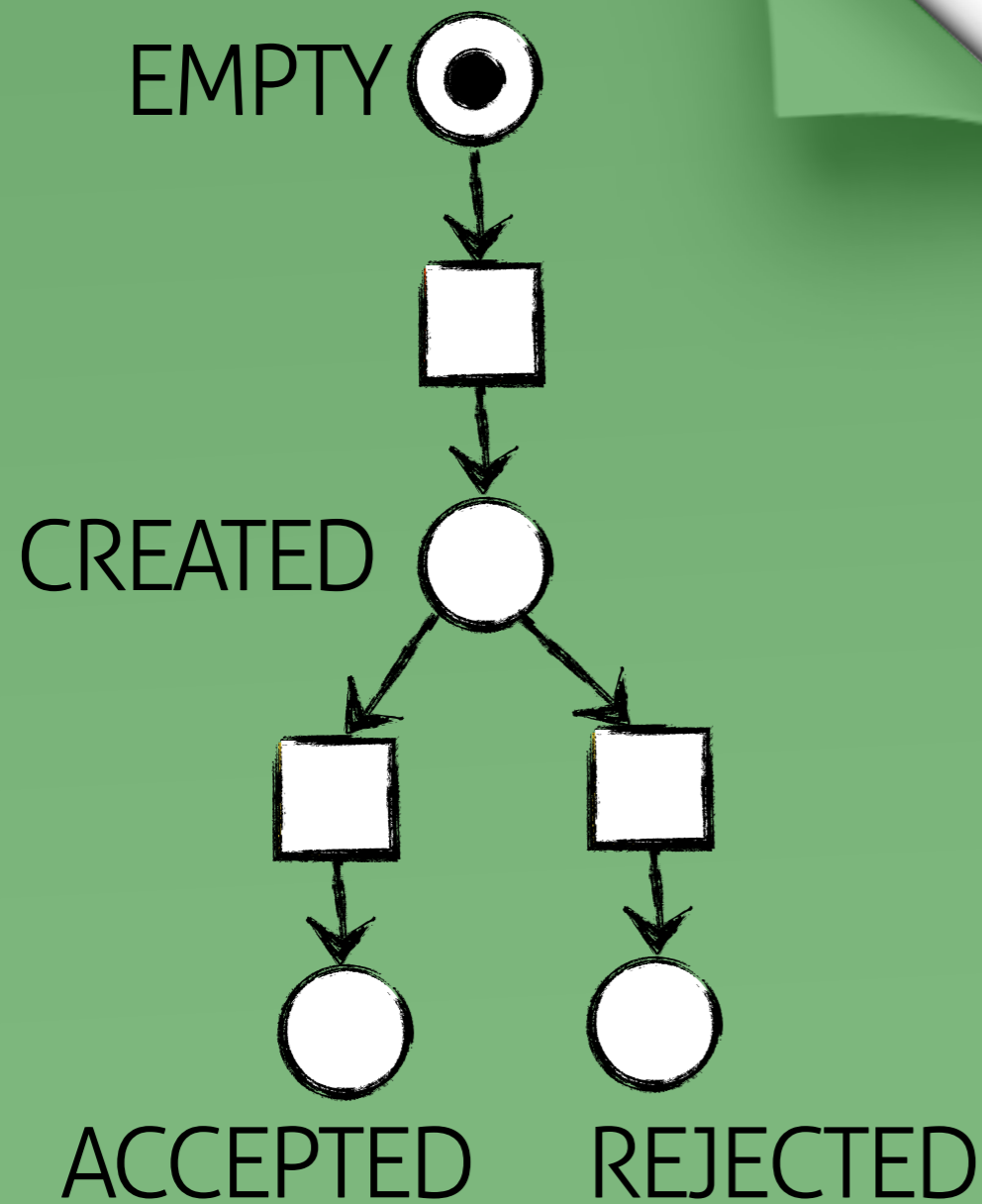
RECEIVED
CONFIRMED
FILED

**“NOUN-CENTRIC”
DECLARATIVE**

SENT
PAID

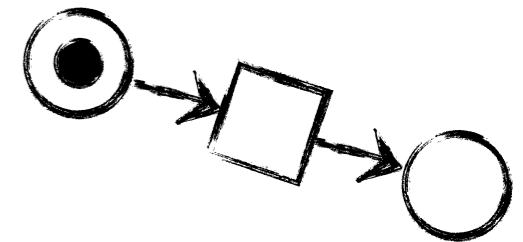


ASSEMBLED
PACKAGED
SHIPPED

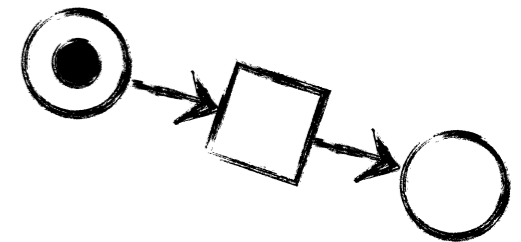


QUOTE

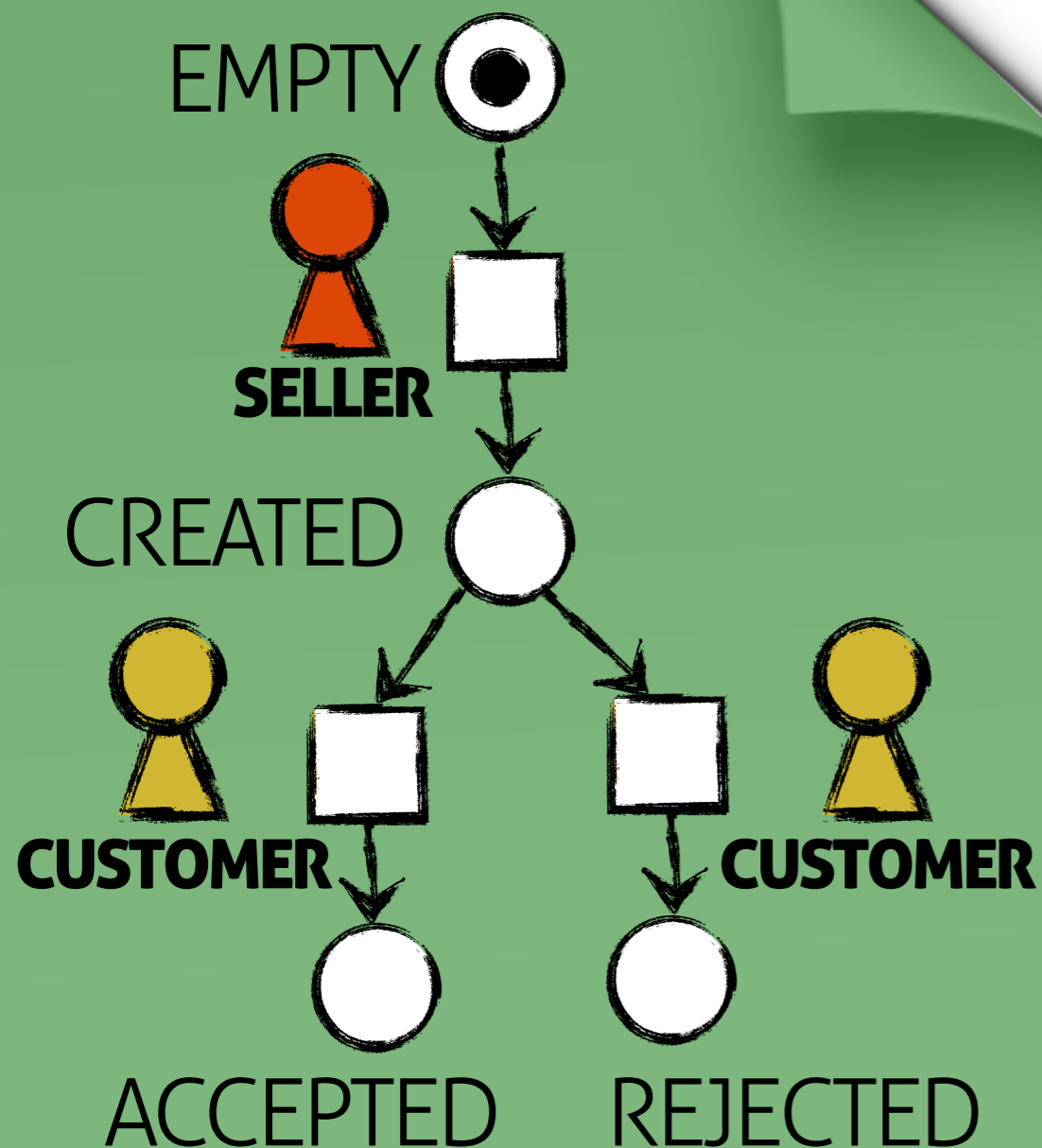
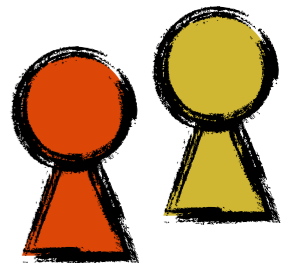
OBJECT LIFE CYCLE MODELS ARTIFACT'S EVOLUTION



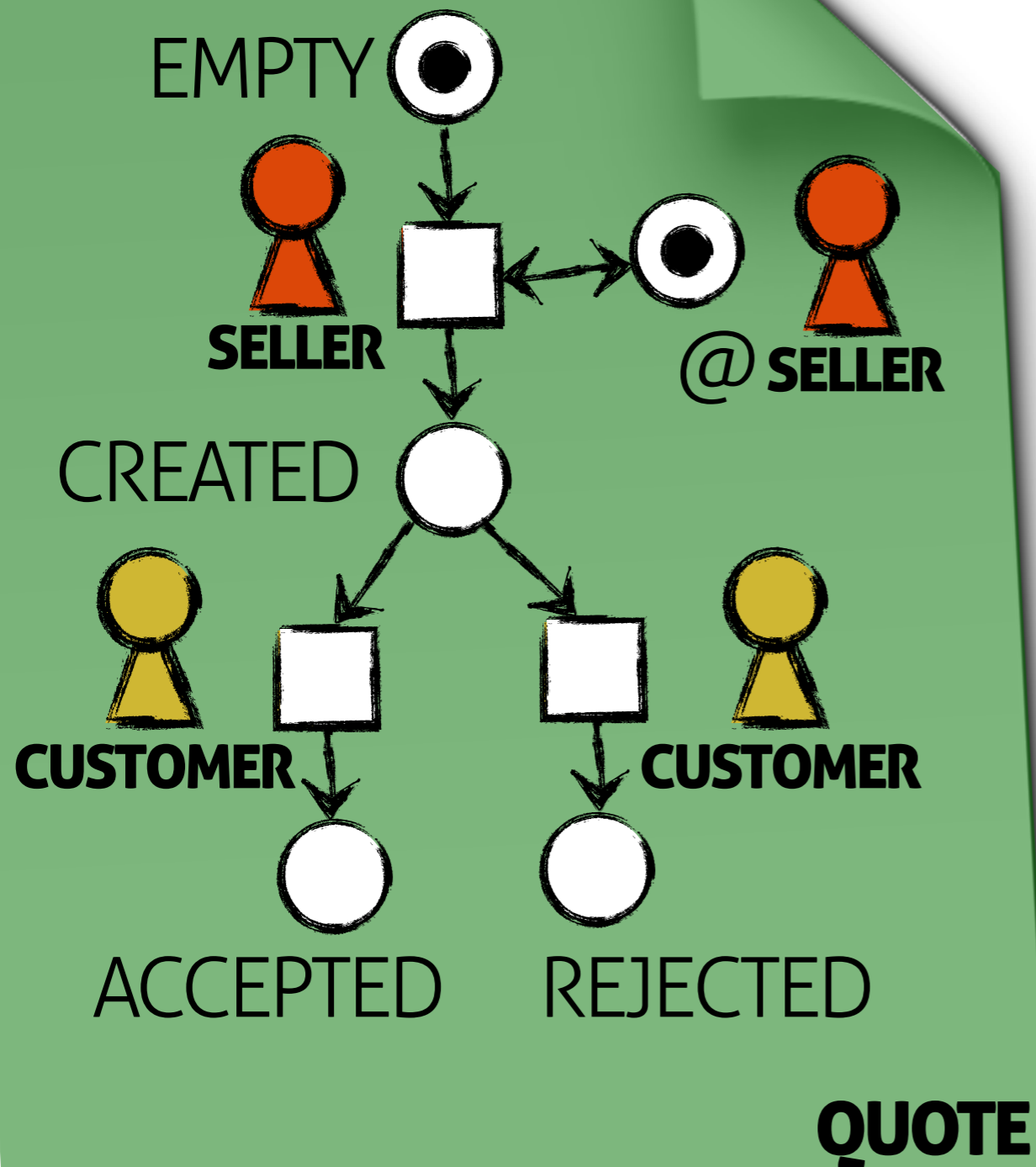
OBJECT LIFE CYCLE
 MODELS ARTIFACT'S
 EVOLUTION



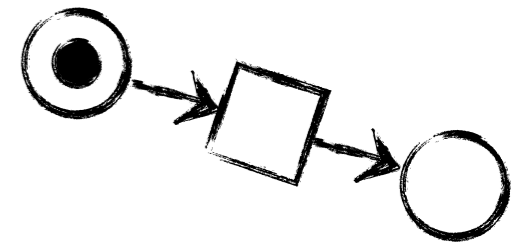
AGENTS
 MAY EXECUTE
 ARTIFACT'S TASKS



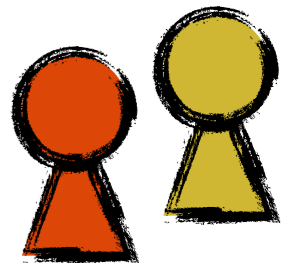
QUOTE



OBJECT LIFE CYCLE
 MODELS ARTIFACT'S
 EVOLUTION



AGENTS
 MAY EXECUTE
 ARTIFACT'S TASKS



LOCATIONS
 INFLUENCE
 EXECUTABILITY





ARTIFACTS
+ AGENTS
+ LOCATIONS



POLICIES



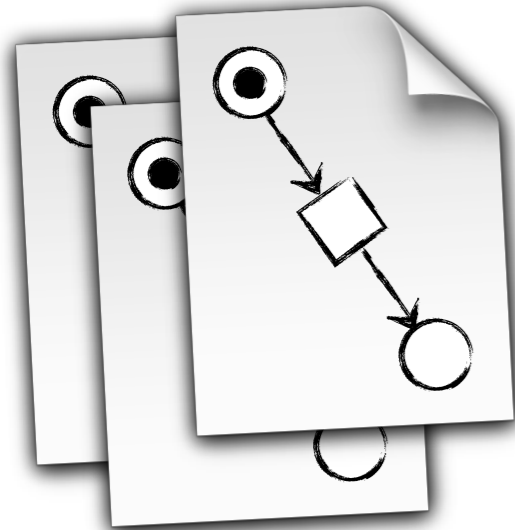
GOAL STATES



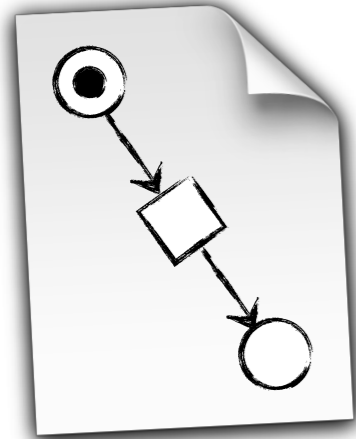
COMPLIANCE
RULES



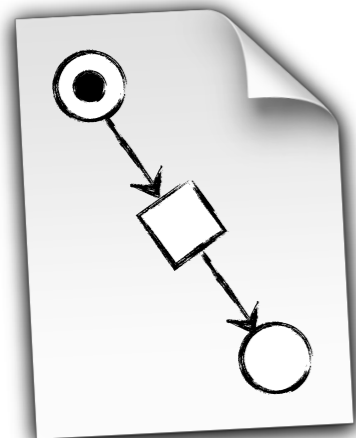
**SOUND + COMPLIANT
BUSINESS PROCESS
(CHOREOGRAPHY)**



ARTIFACTS
+ AGENTS
+ LOCATIONS

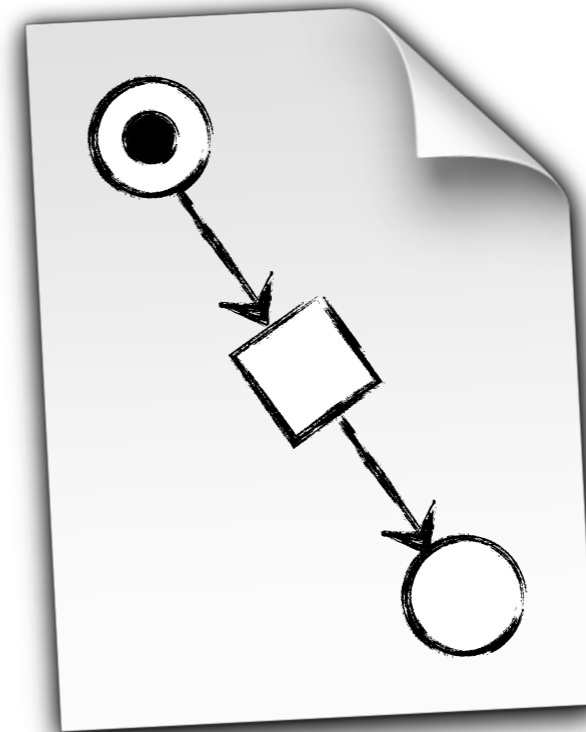


POLICIES



GOAL STATES

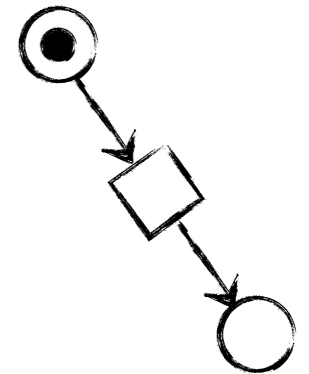
COMPLIANCE
RULES



**SOUND + COMPLIANT
BUSINESS PROCESS
(CHOREOGRAPHY)**



ARTIFACT-CENTRIC MODELING



ARTIFACTS + OBJECT LIFE CYCLES

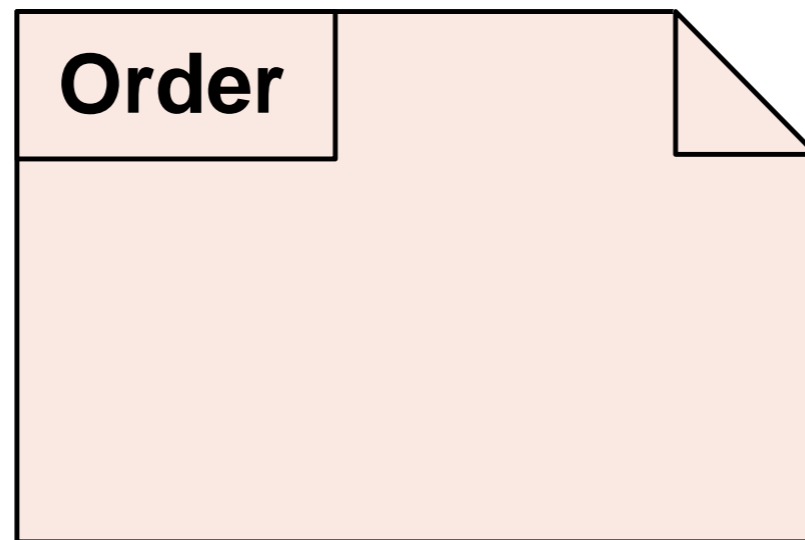
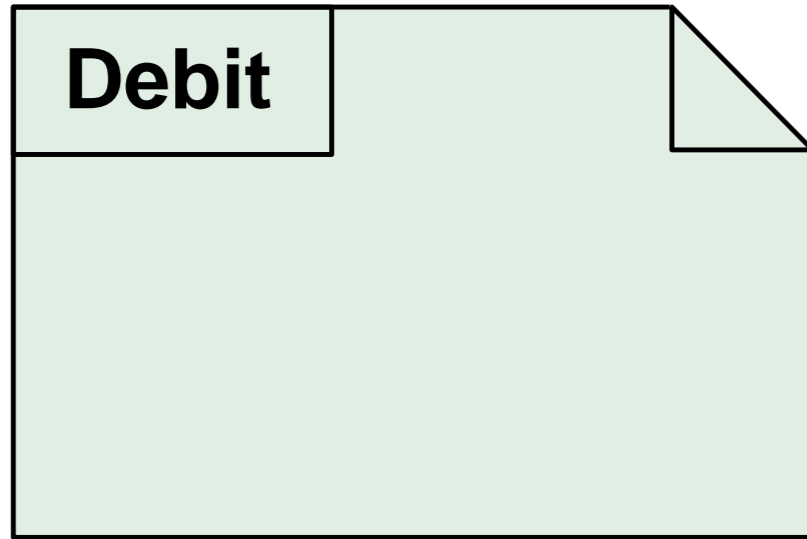


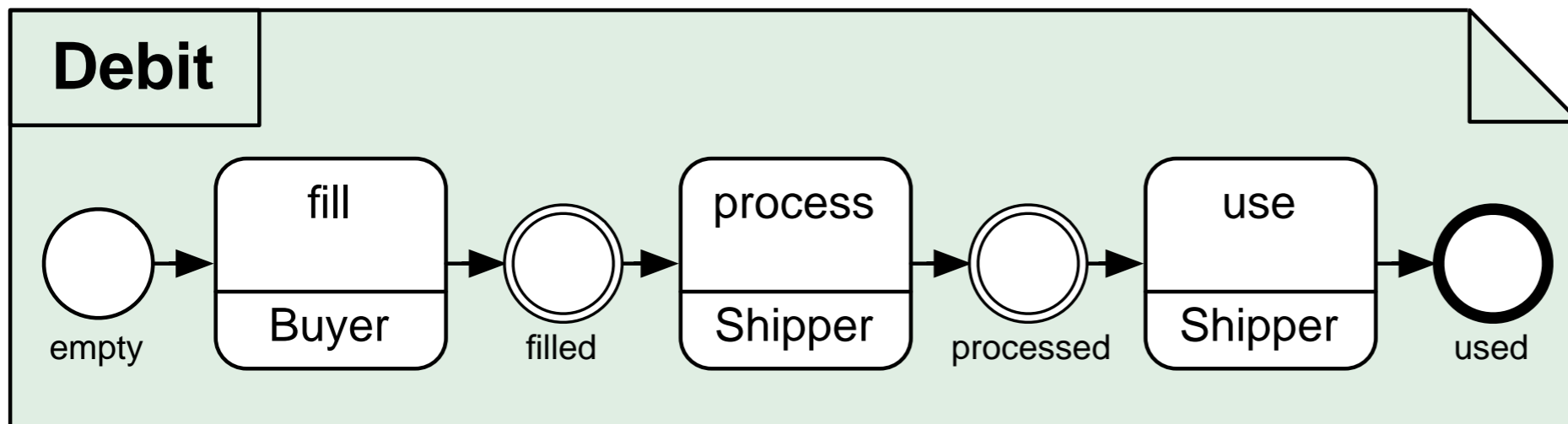
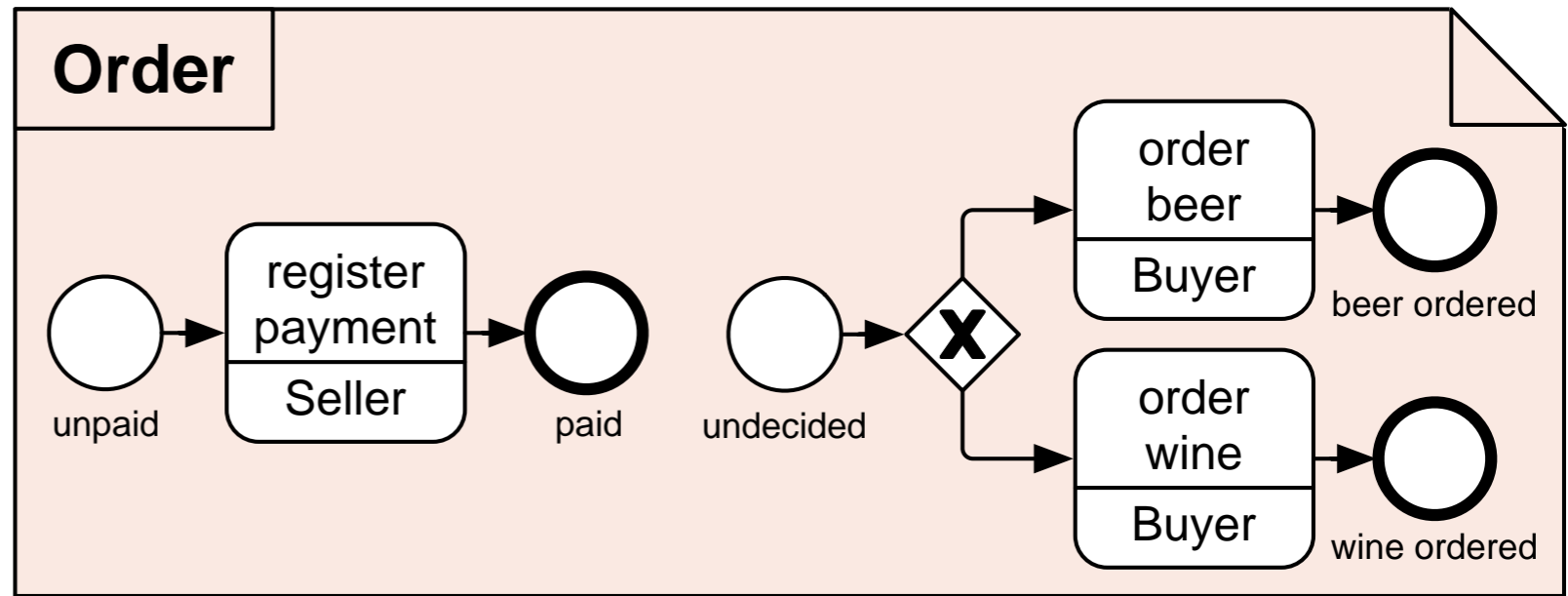
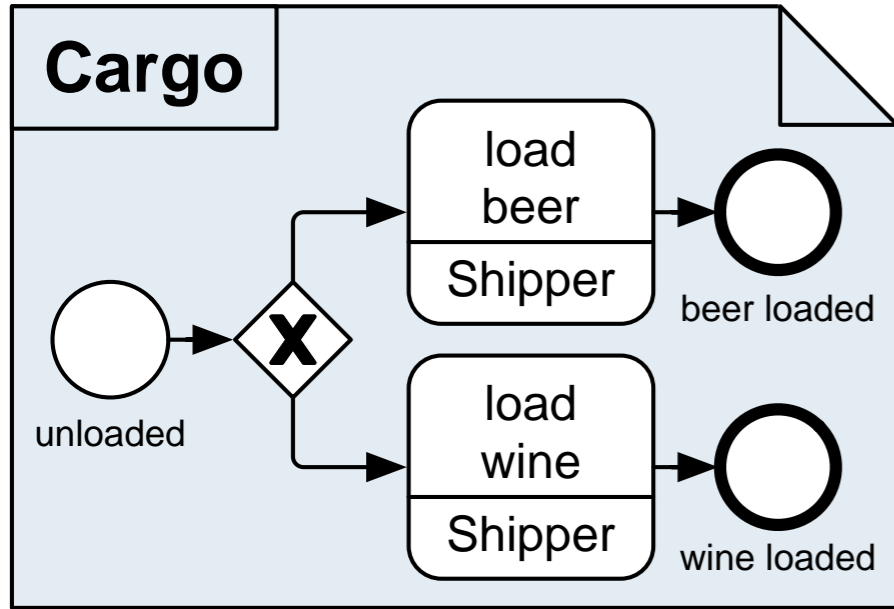
LOCATIONS + MESSAGE EXCHANGE

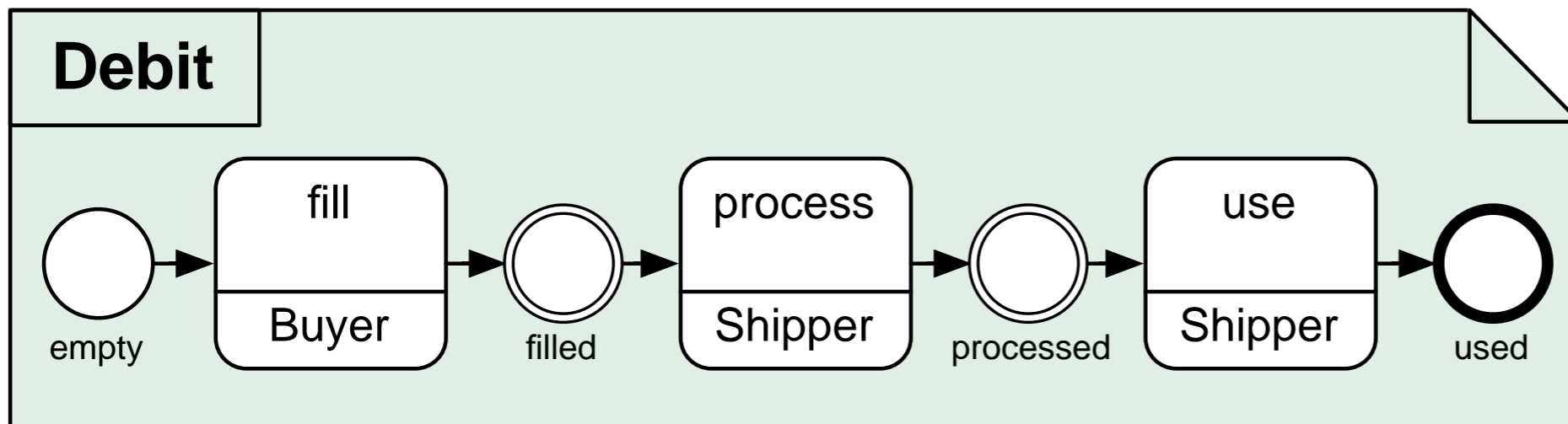
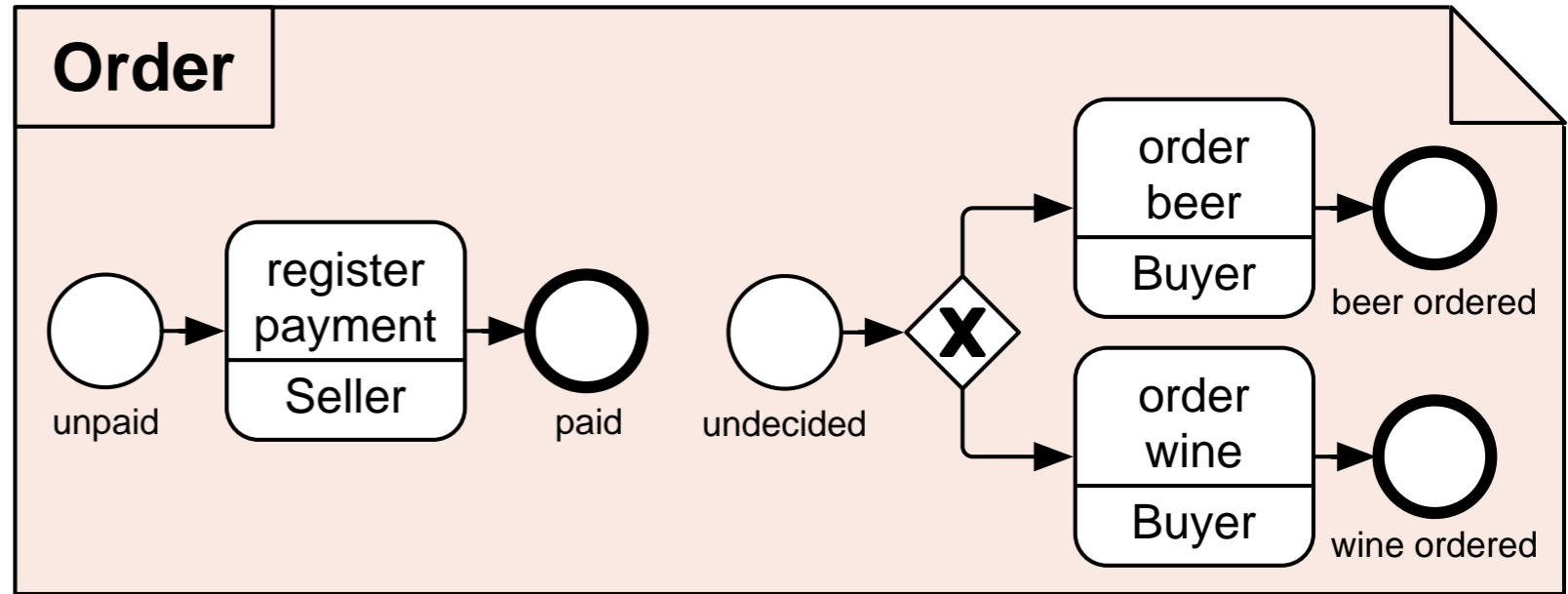
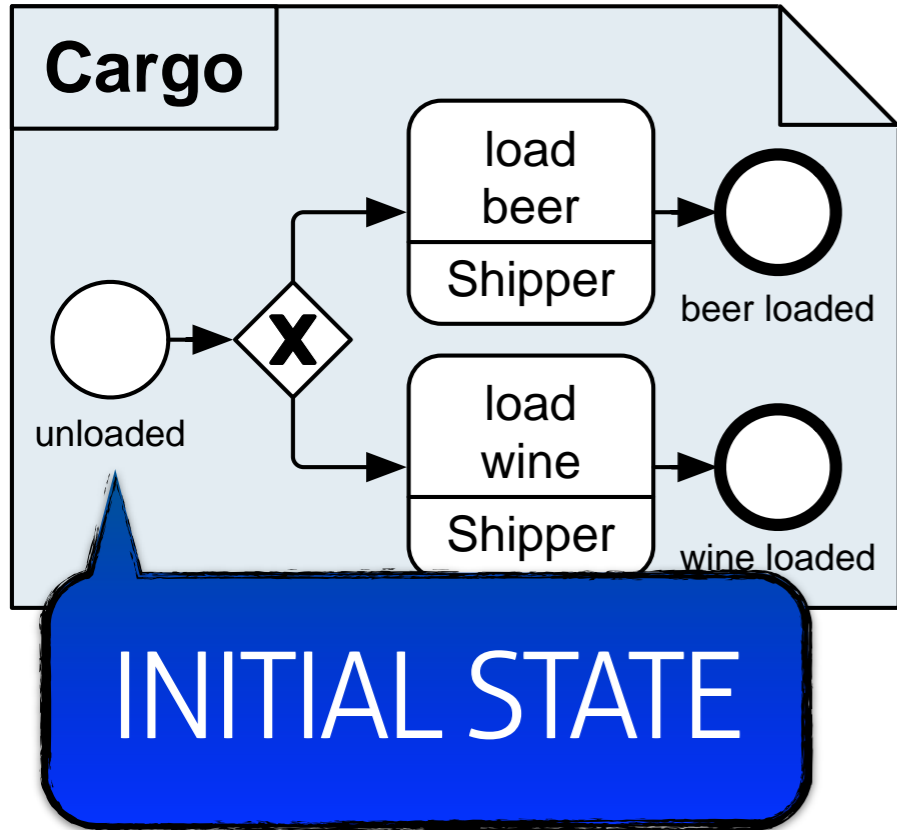


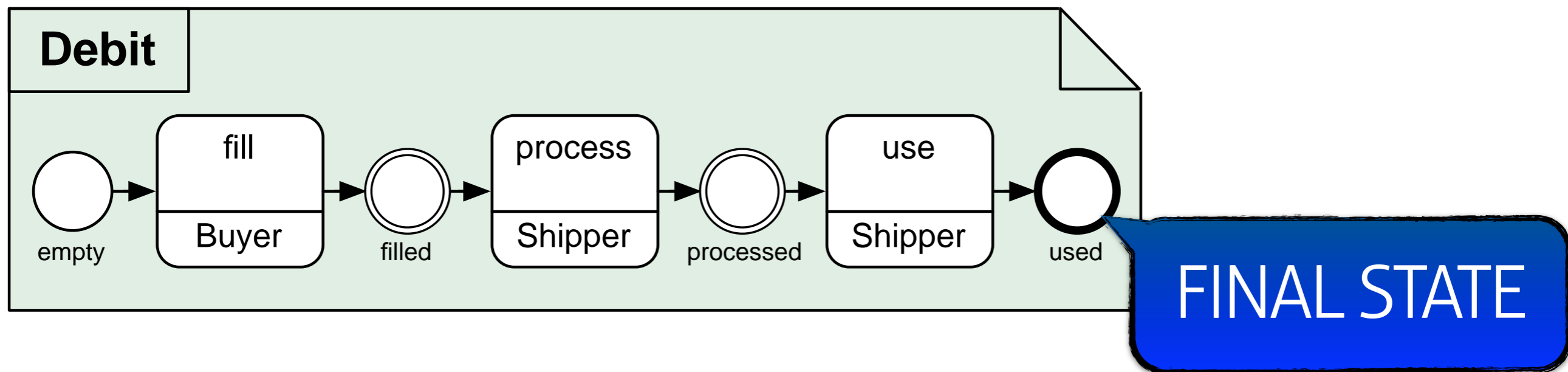
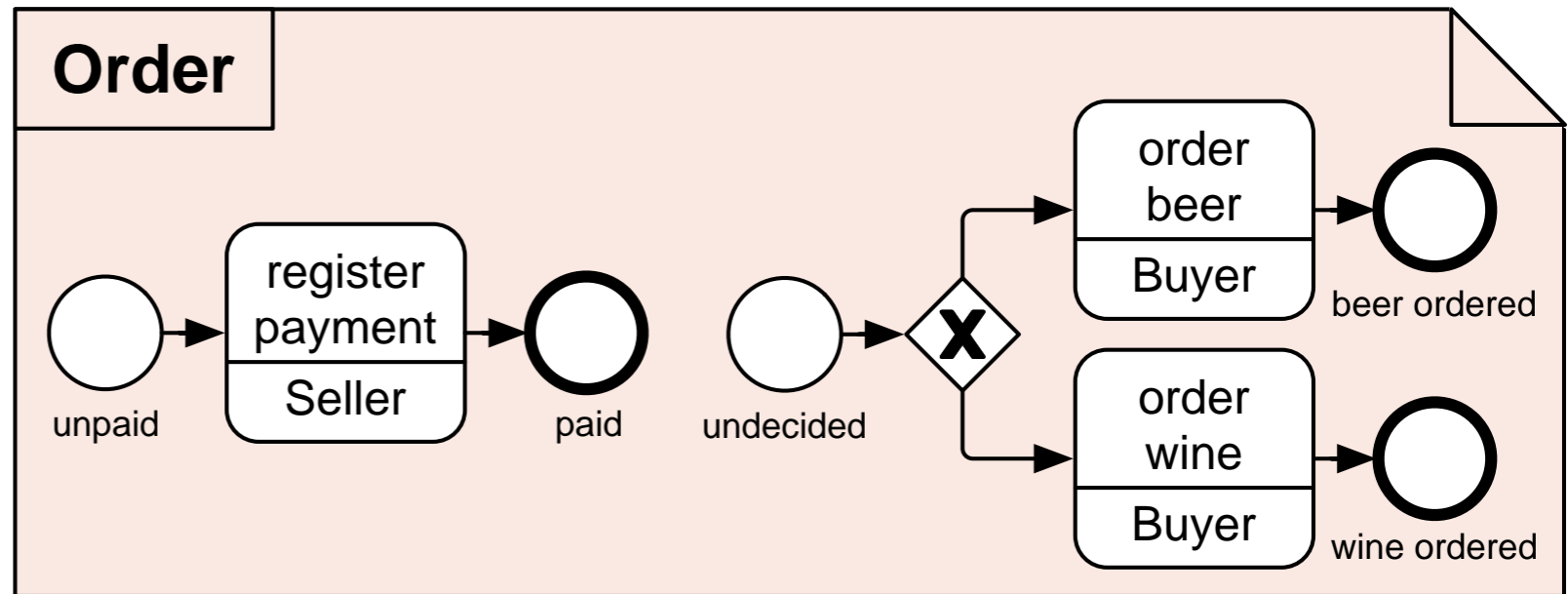
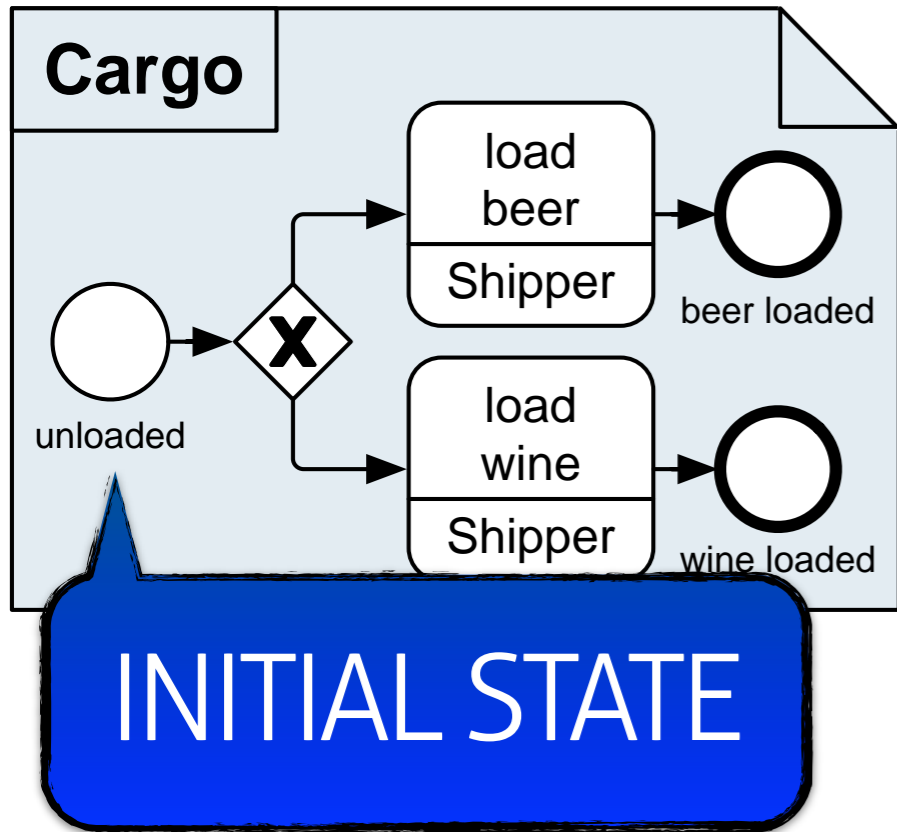
POLICIES + GOAL STATES

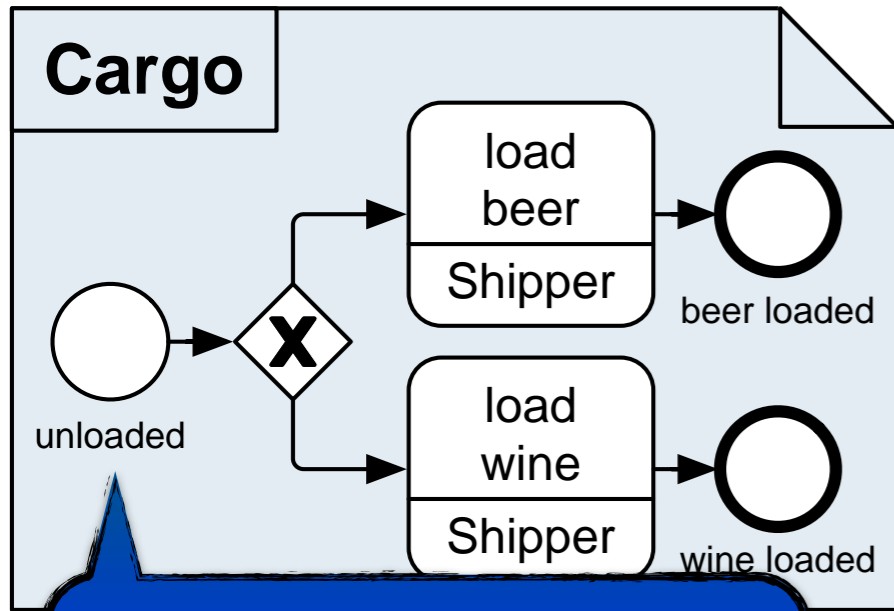




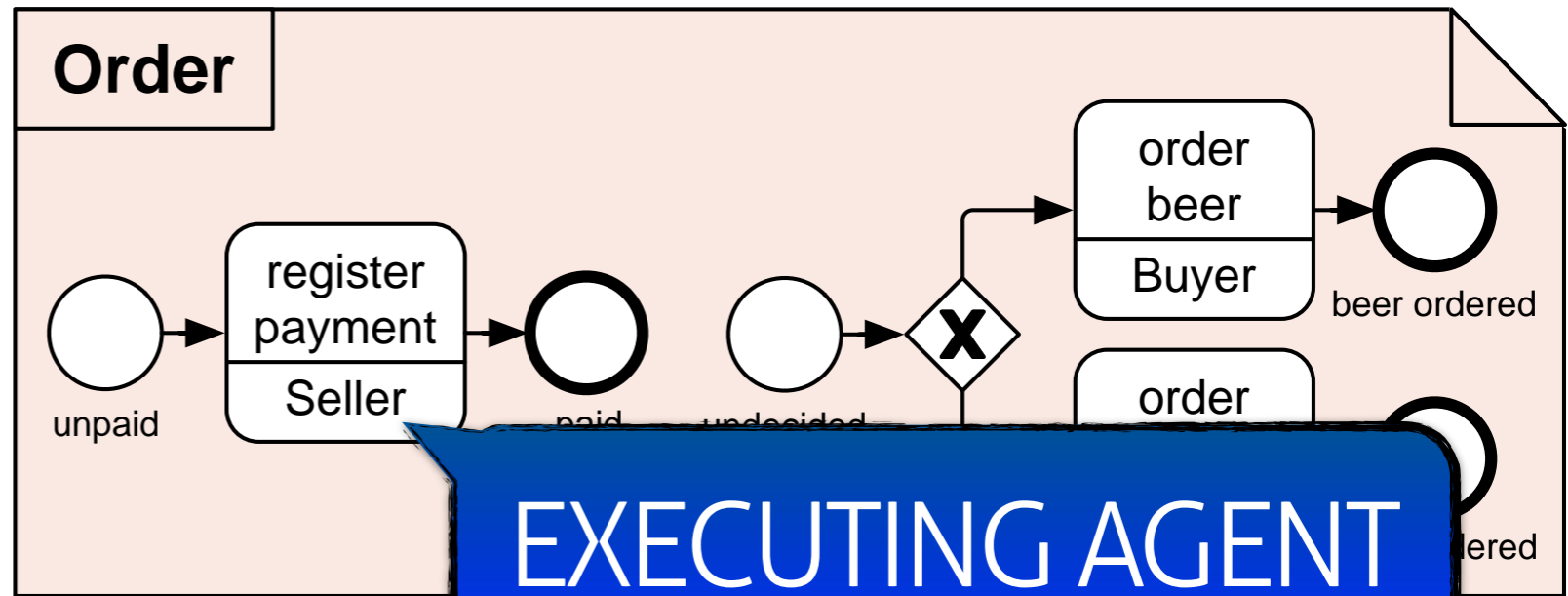




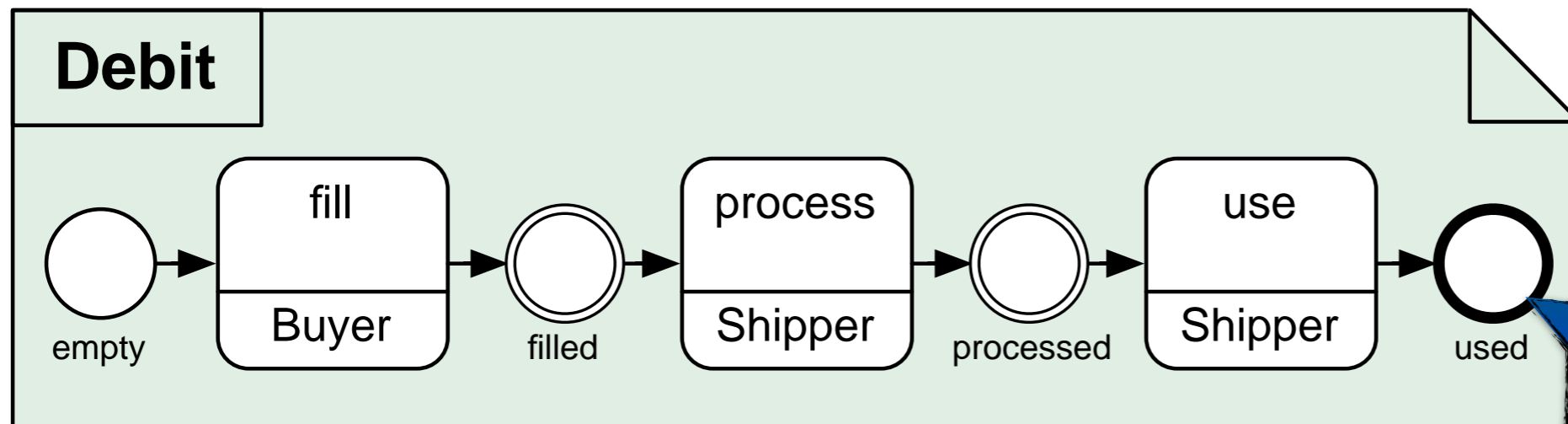




INITIAL STATE



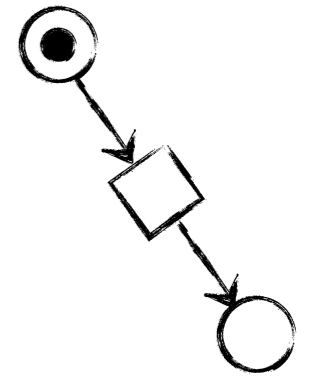
EXECUTING AGENT



FINAL STATE

1

ARTIFACT-CENTRIC MODELING

**2**

ARTIFACTS + OBJECT LIFE CYCLES

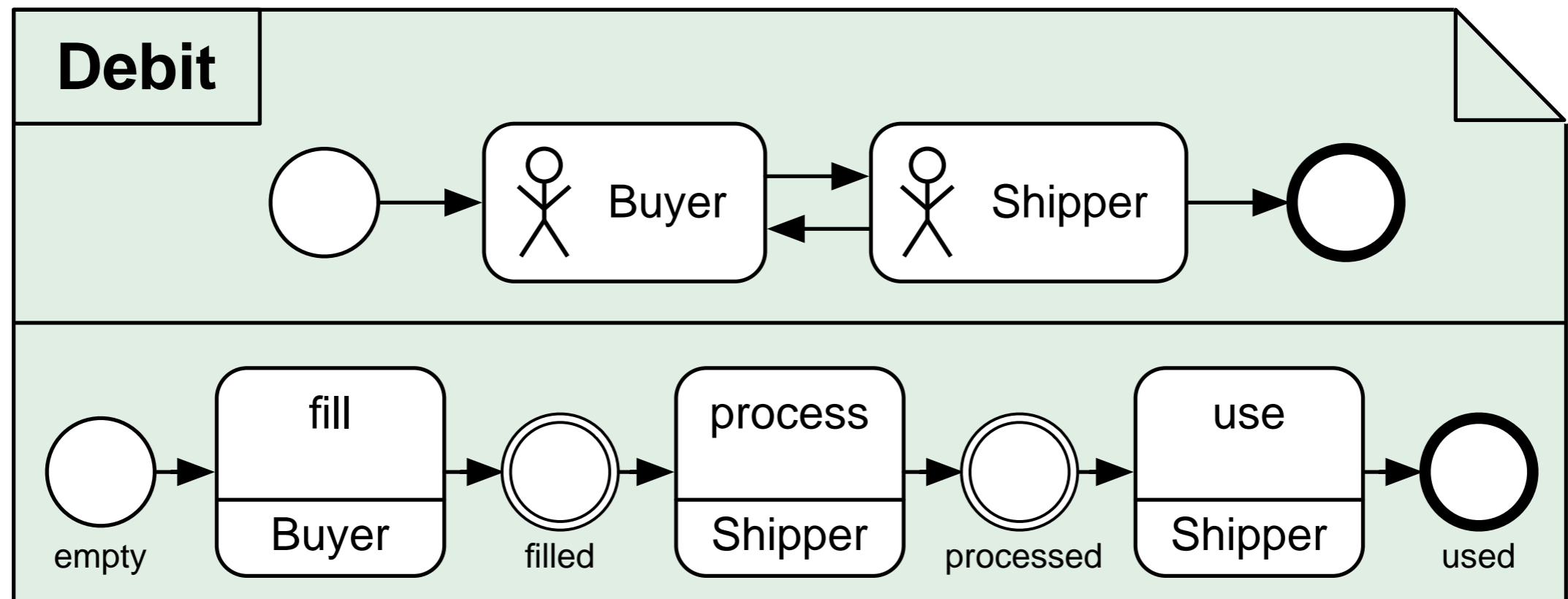
**3**

LOCATIONS + MESSAGE EXCHANGE

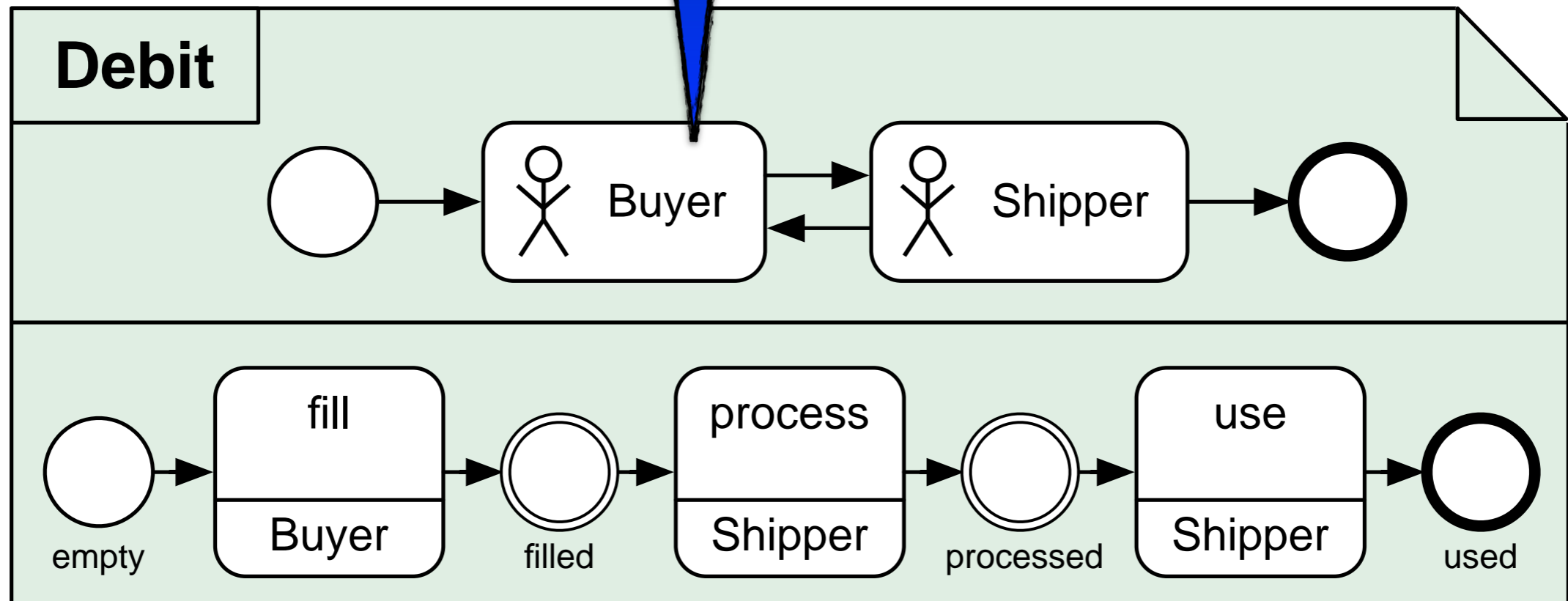
**4**

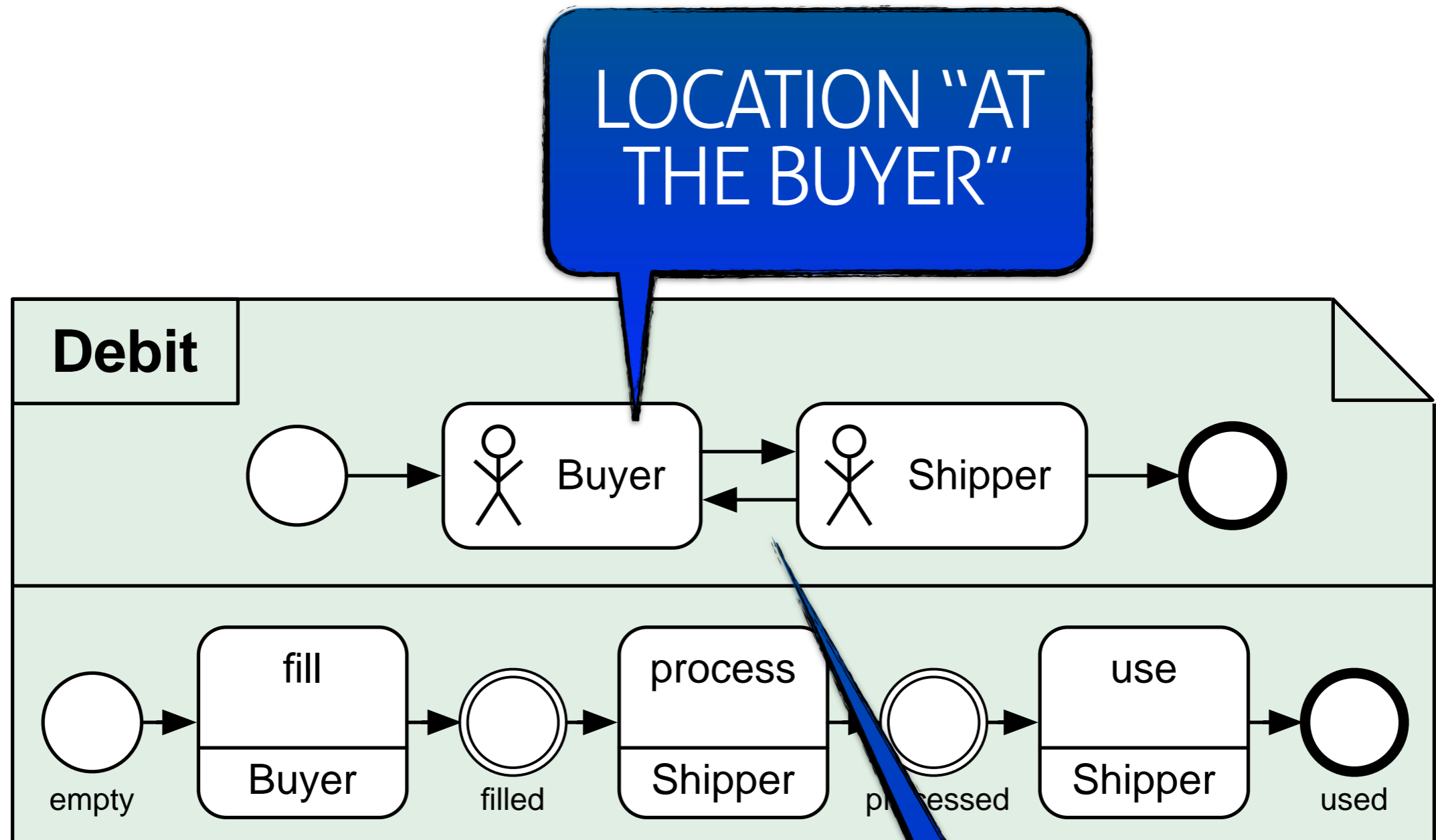
POLICIES + GOAL STATES



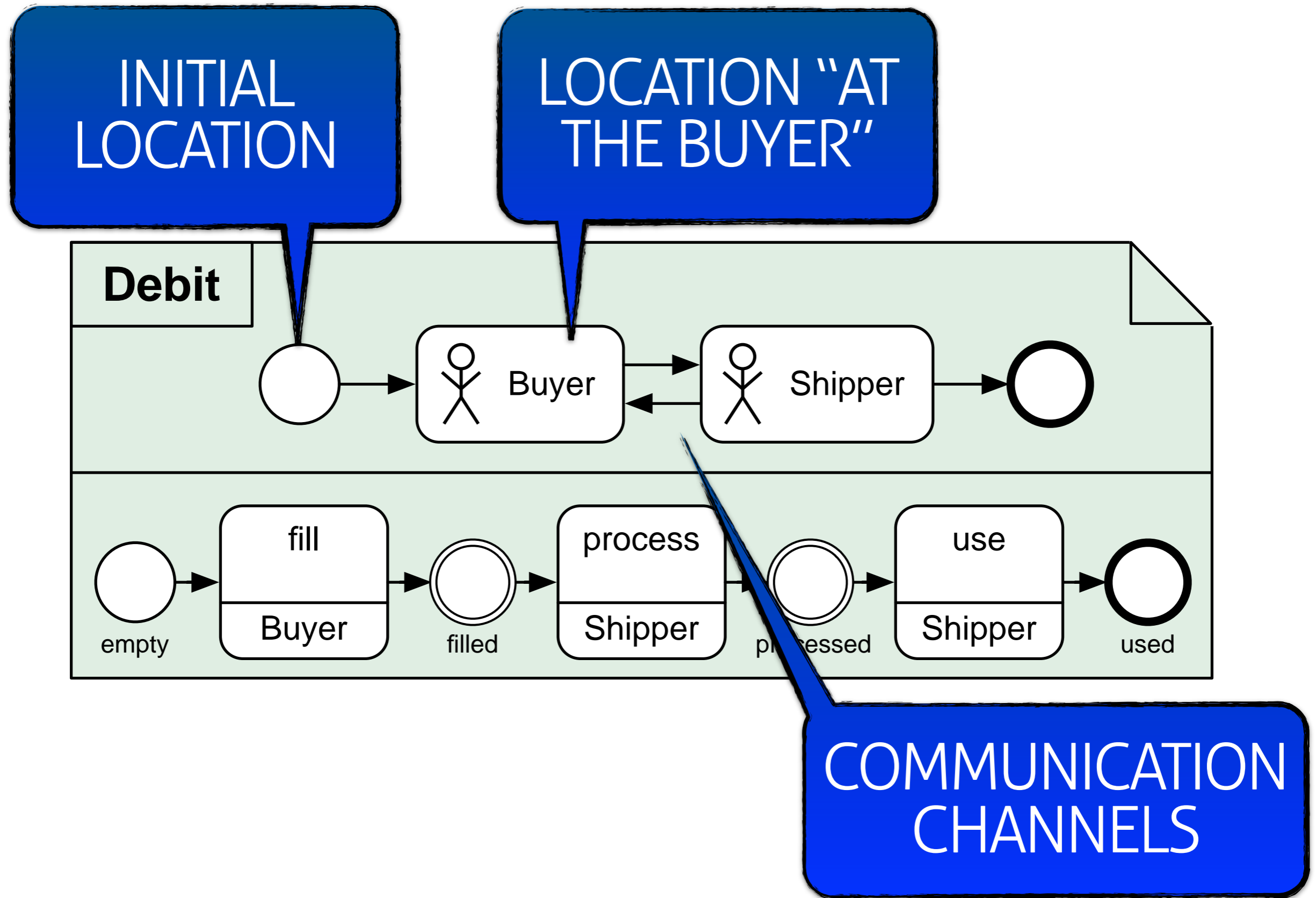


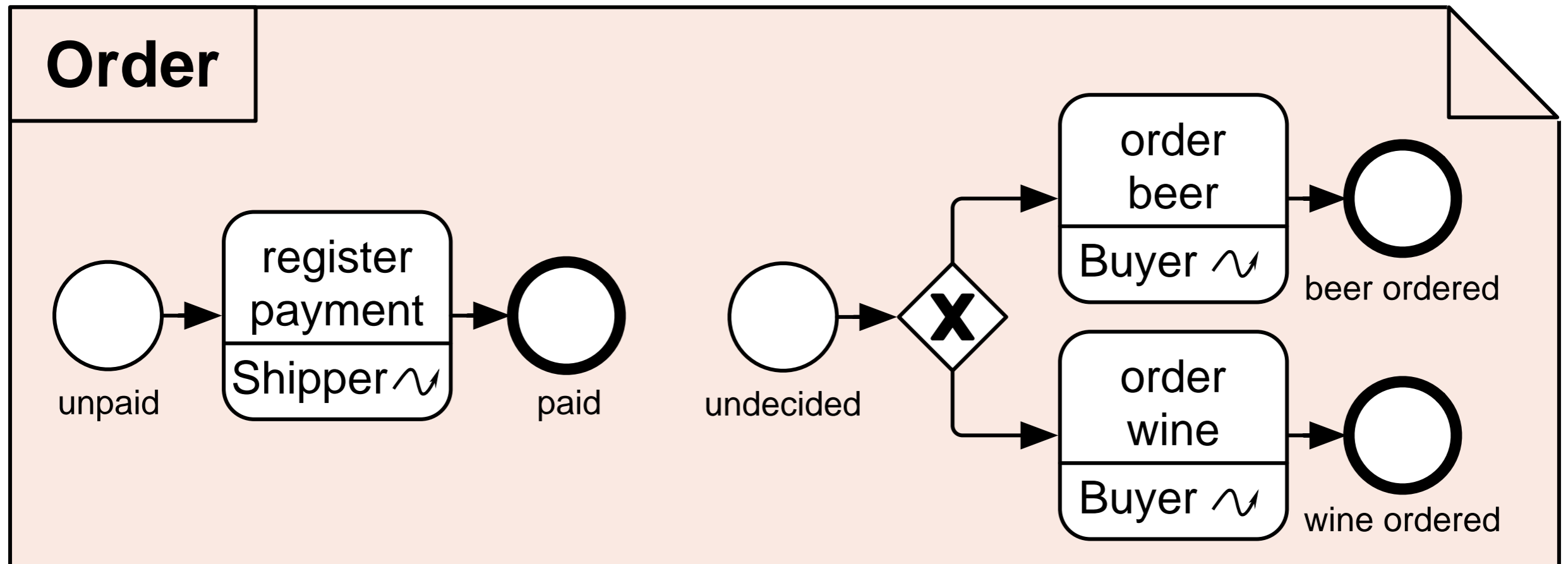
LOCATION "AT THE BUYER"

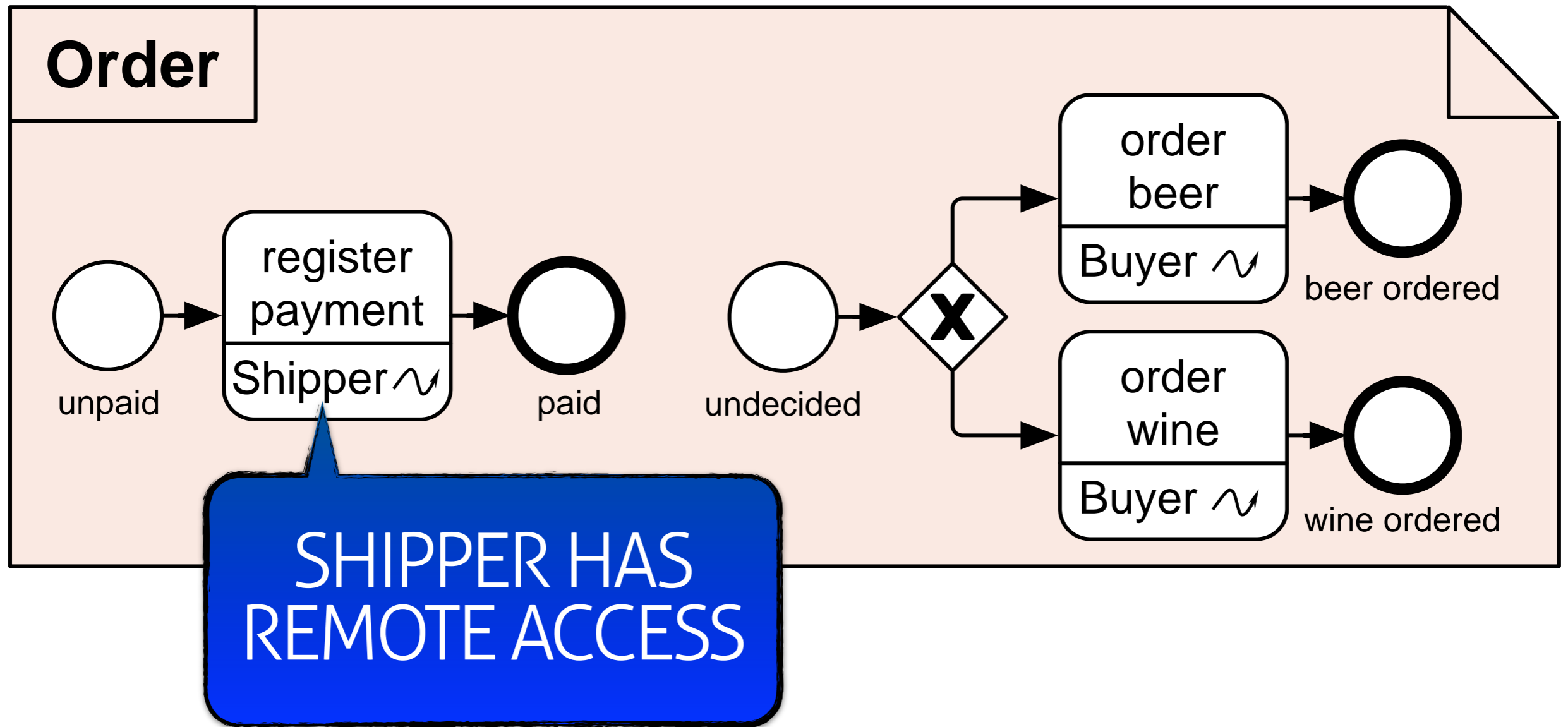


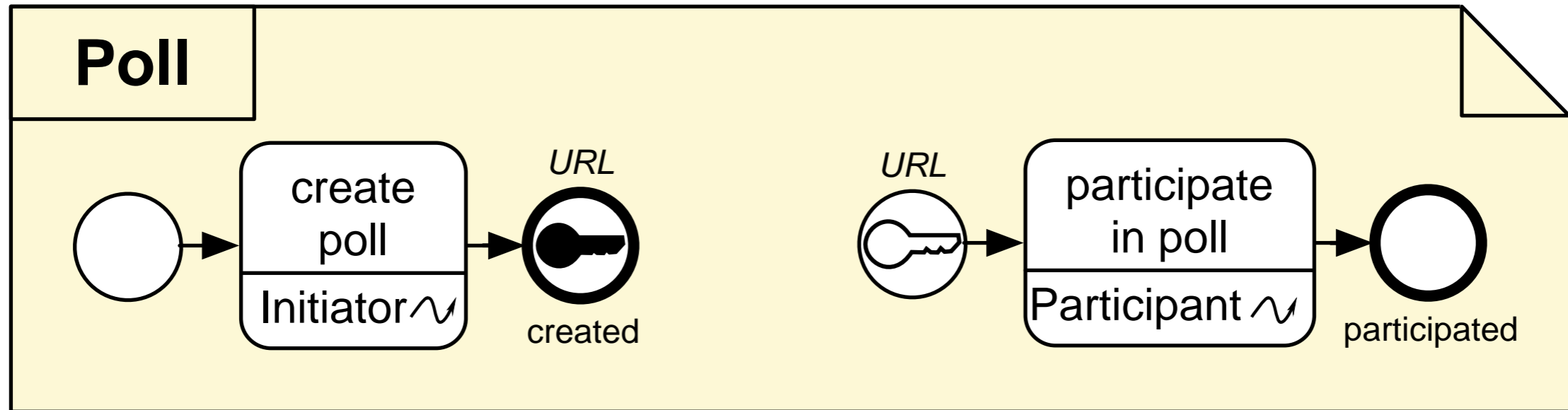


COMMUNICATION CHANNELS

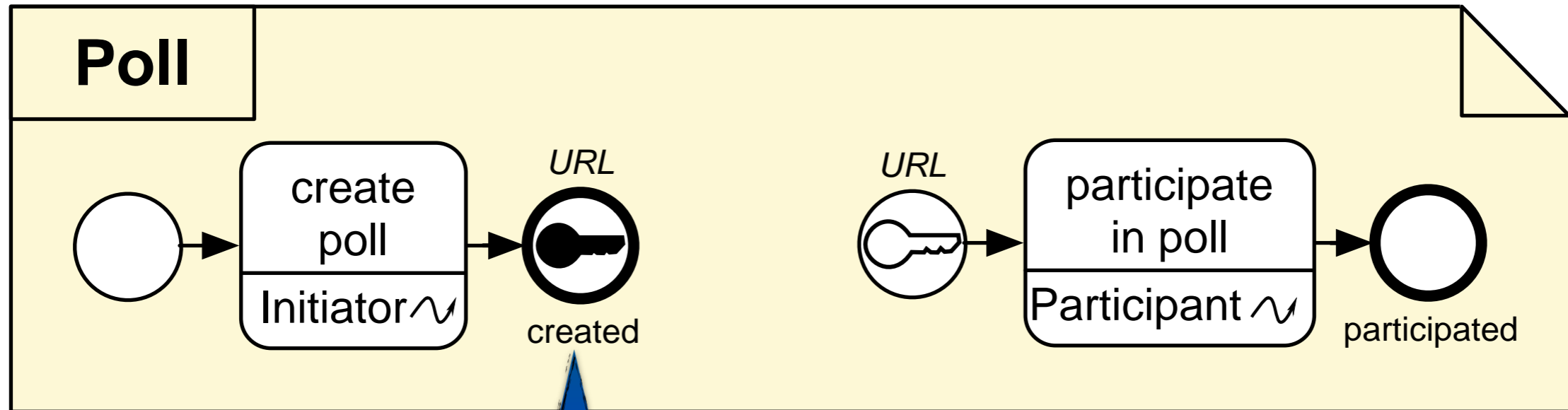








<http://doodle.com/n5i4xqdrvn68p8g7>

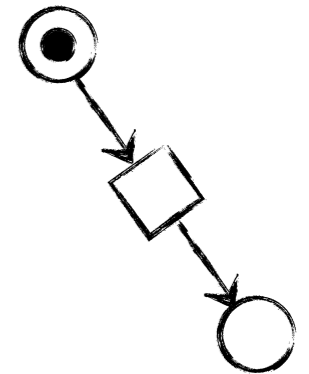


REMOTE ACCESS IS GRANTED

<http://doodle.com/n5i4xqdrvn68p8g7>

1

ARTIFACT-CENTRIC MODELING

**2**

ARTIFACTS + OBJECT LIFE CYCLES

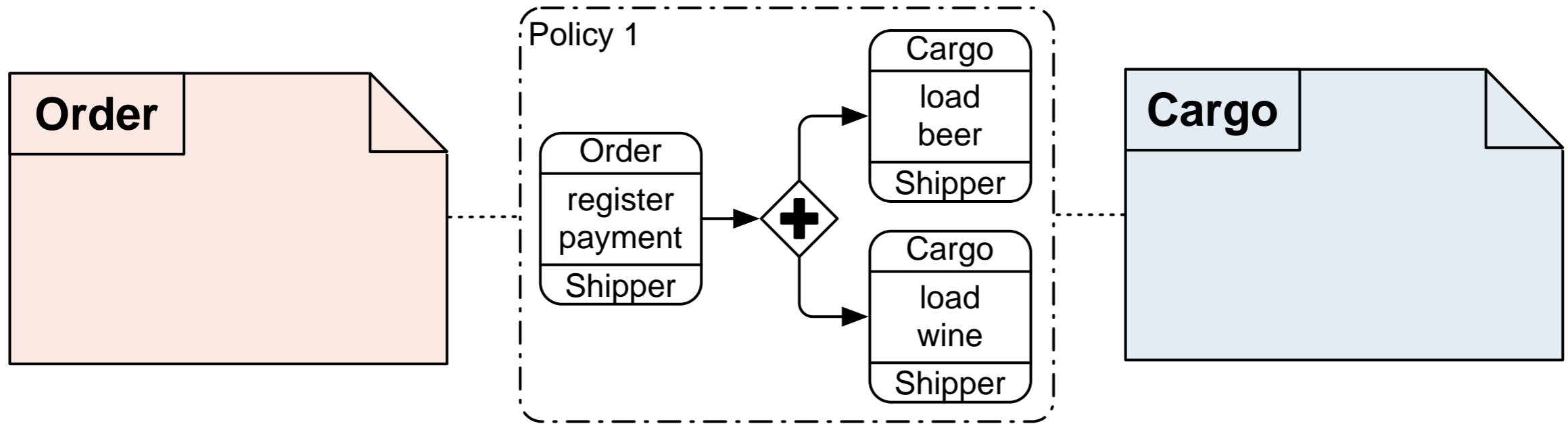
**3**

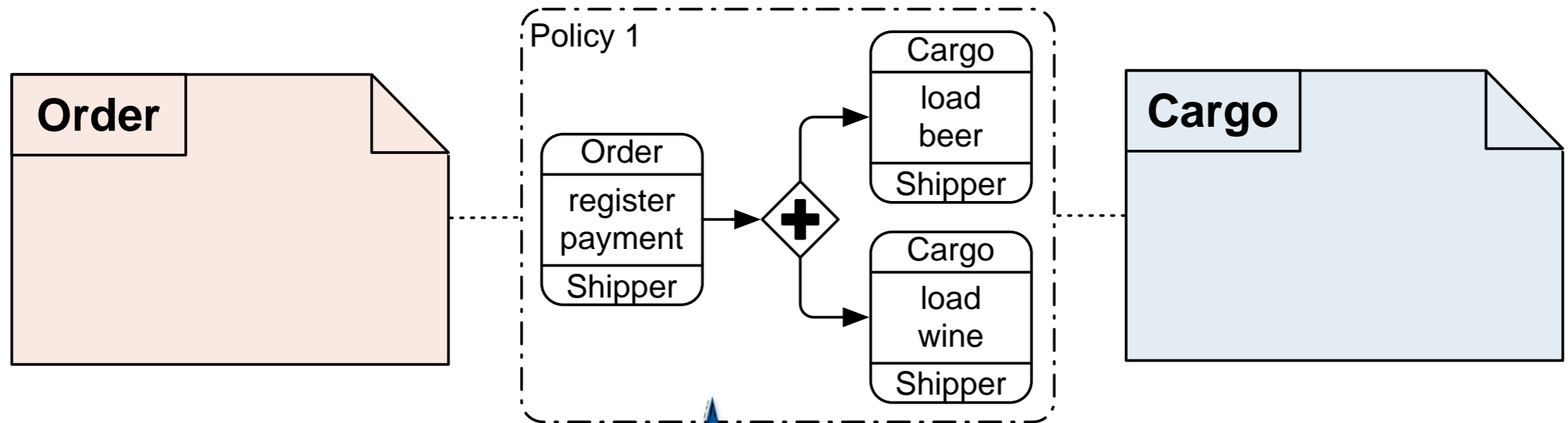
LOCATIONS + MESSAGE EXCHANGE

**4**

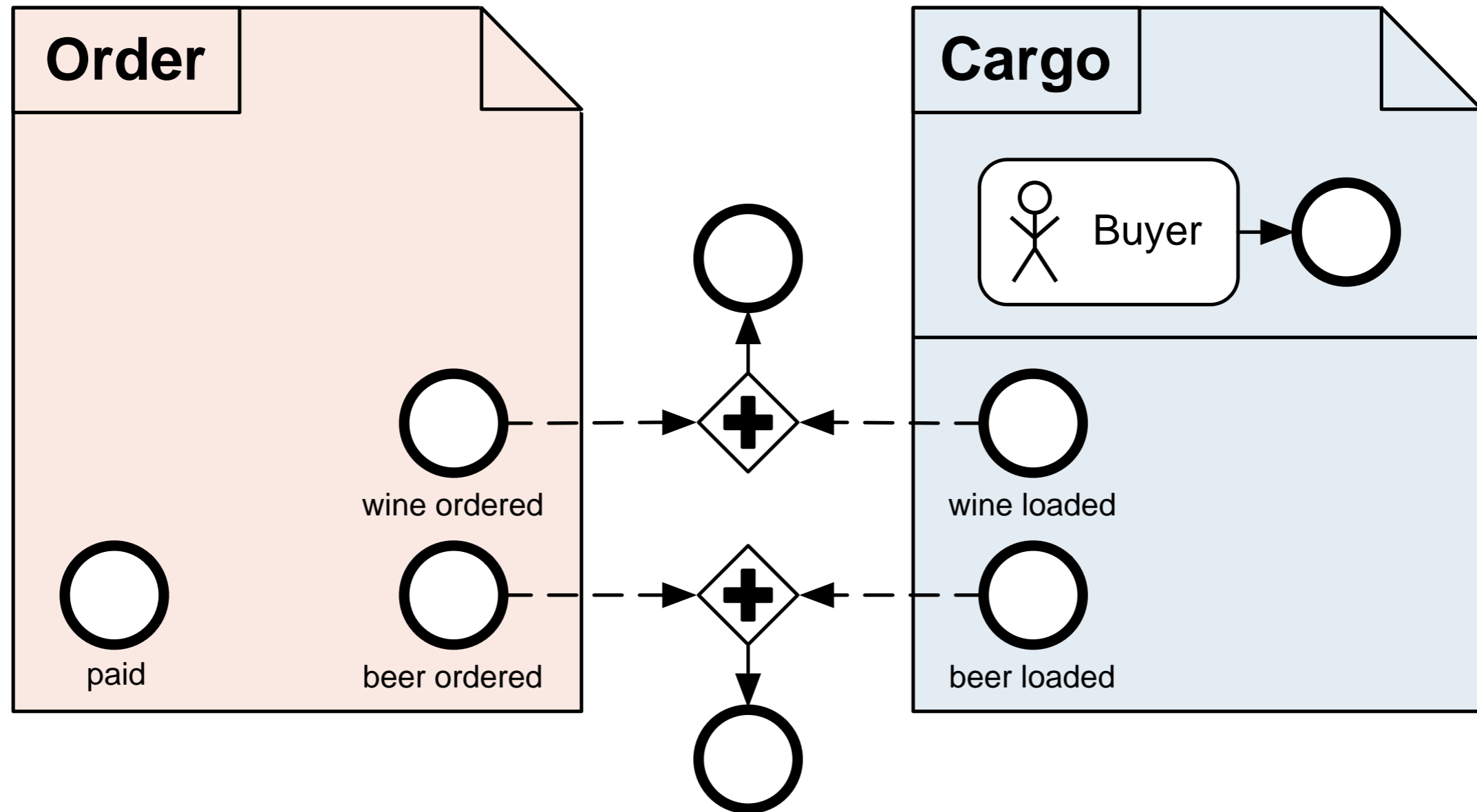
POLICIES + GOAL STATES

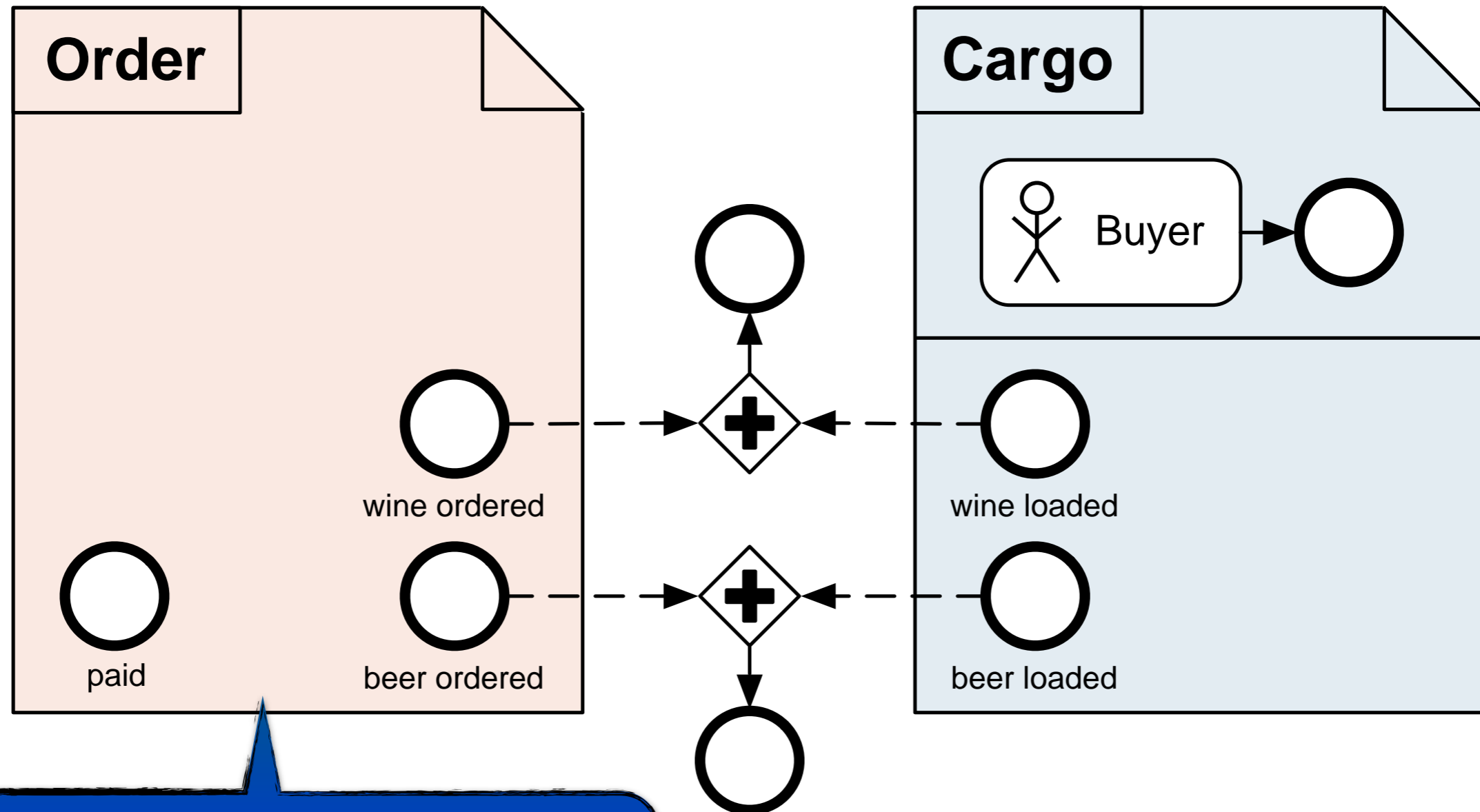




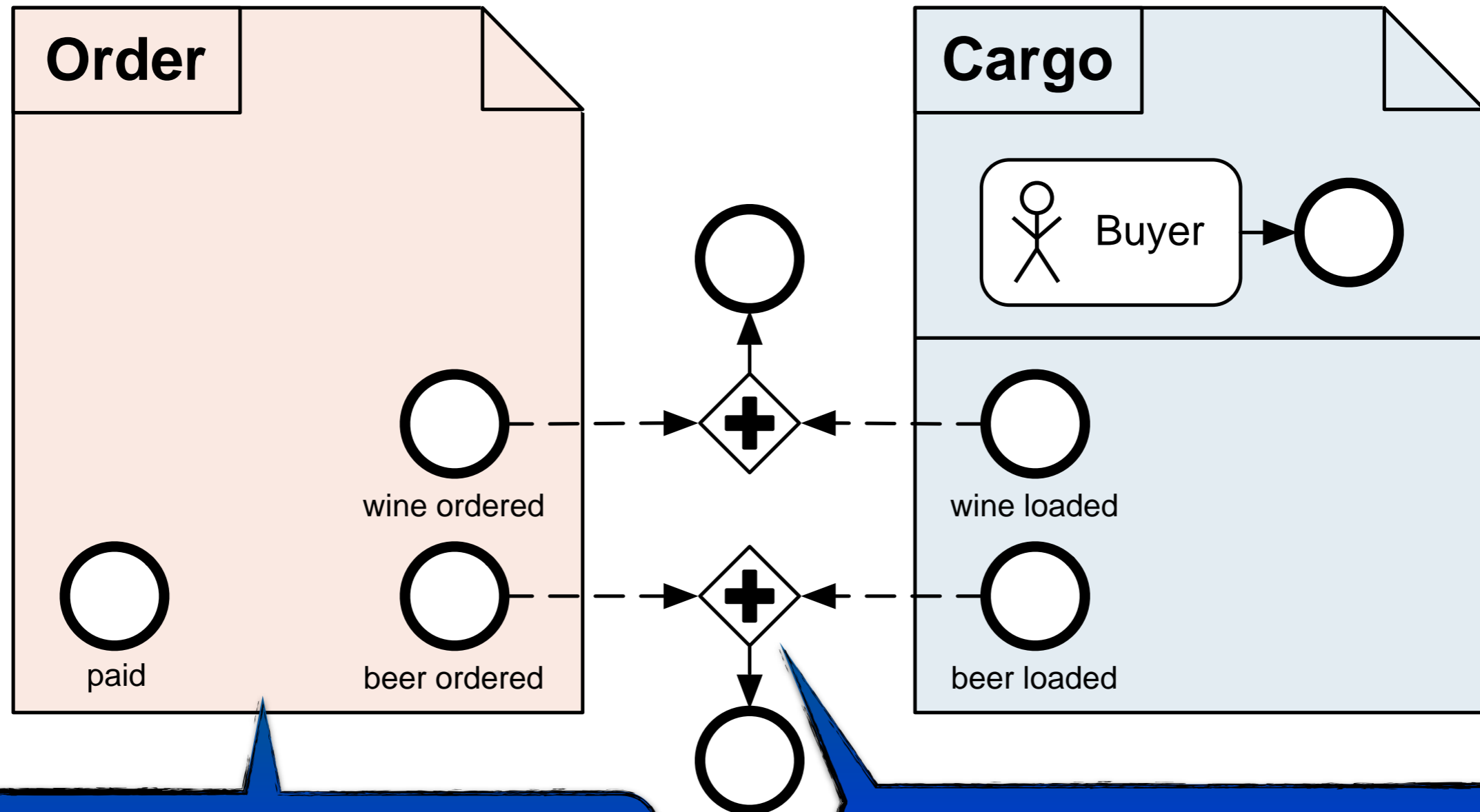


CONSTRAIN ORDER OF ACTIONS



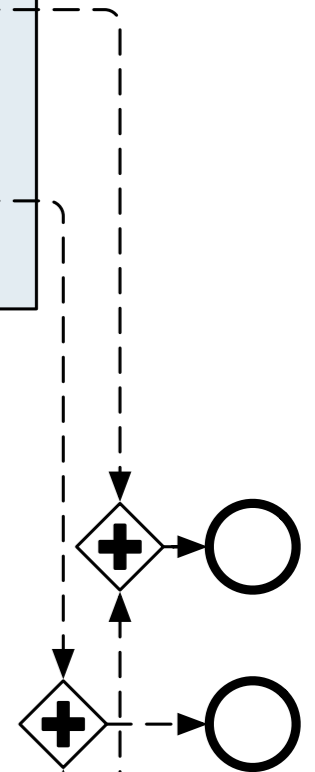
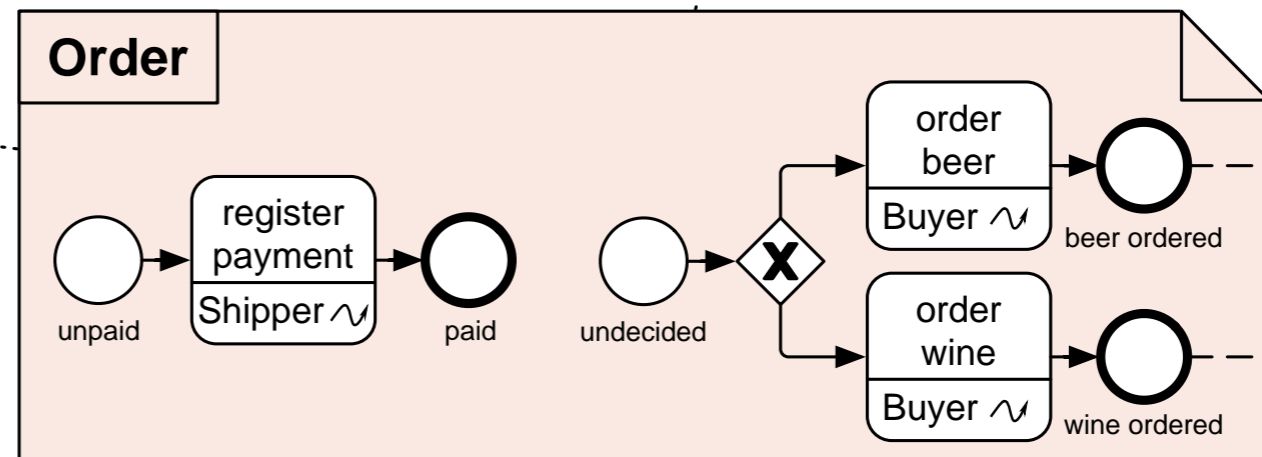
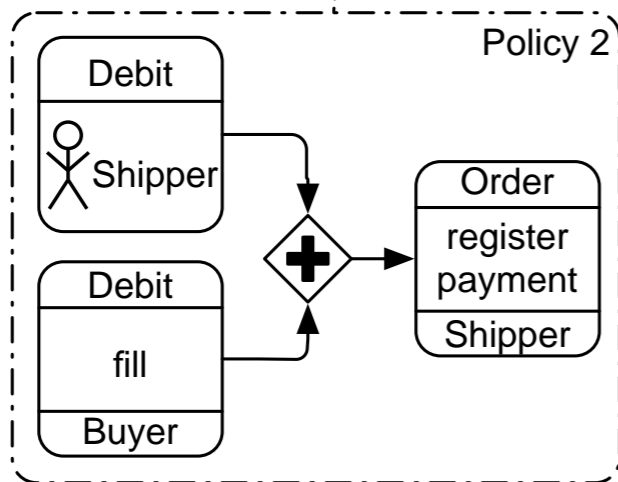
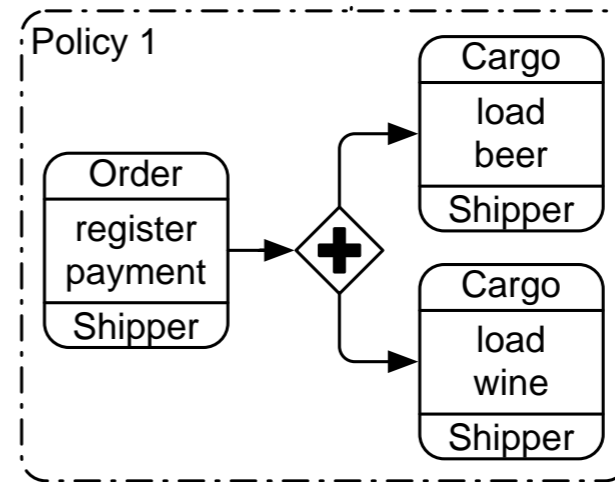
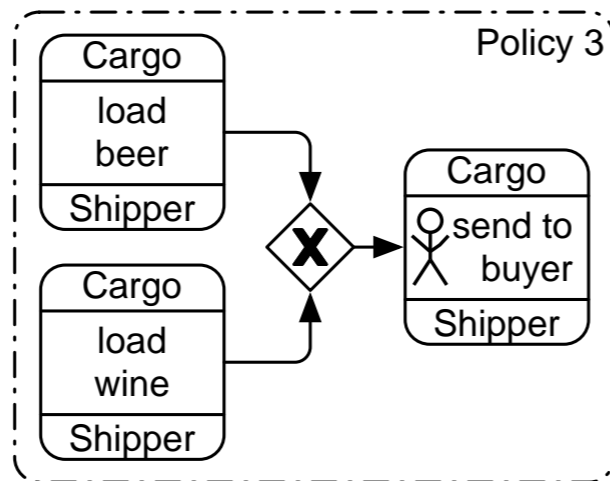
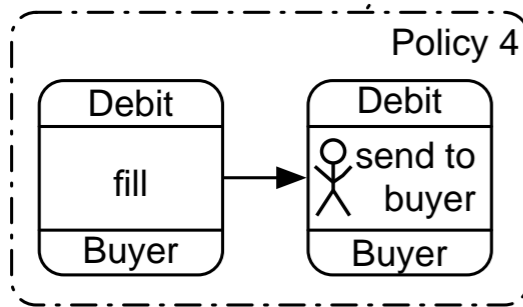
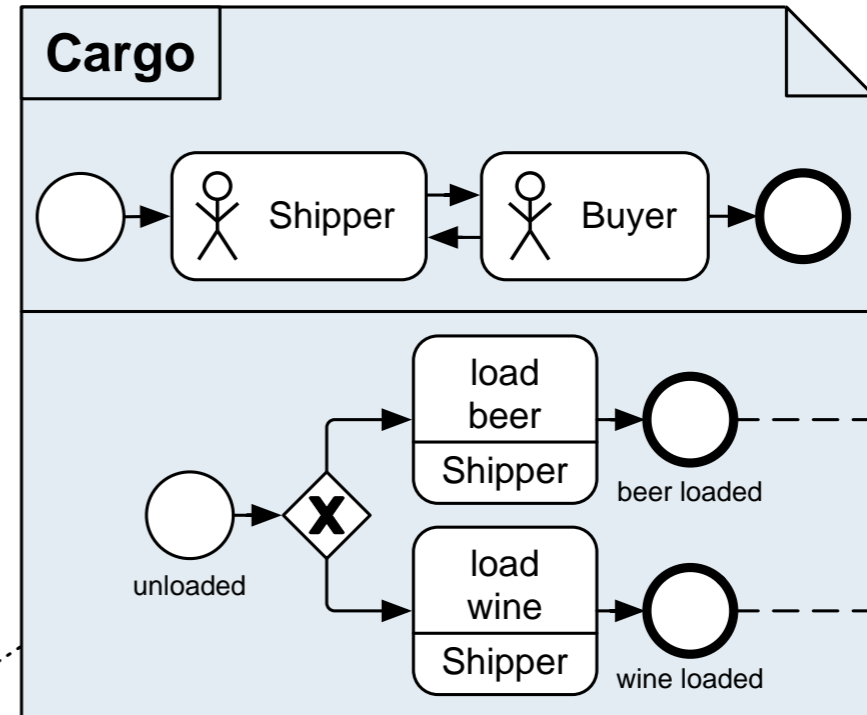
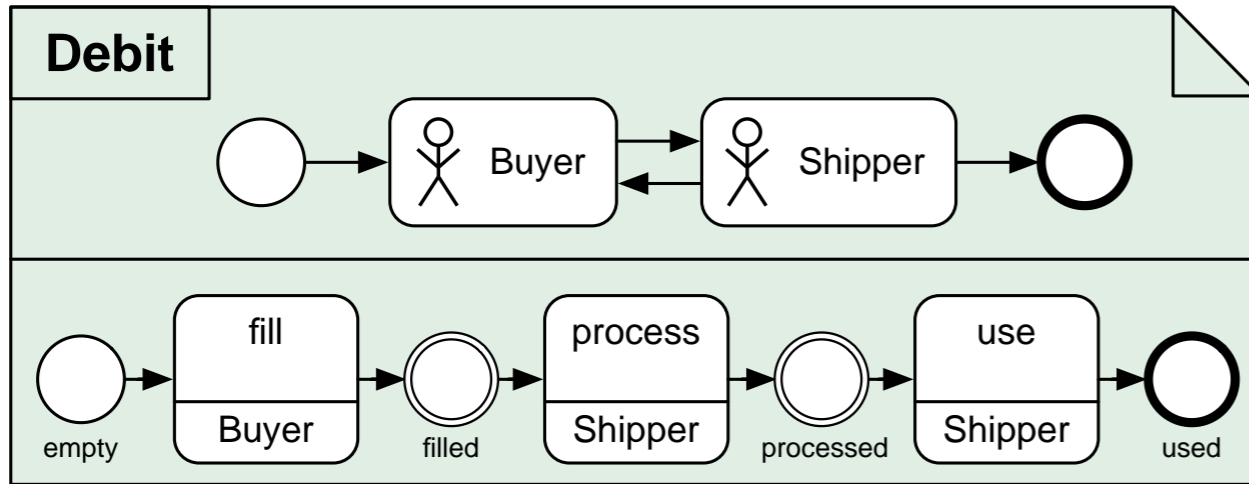


SPECIAL VIEW: SHOW ONLY FINAL STATES



SPECIAL VIEW: SHOW ONLY FINAL STATES

MAKE THIS COMBINATION VALID



DATA OBJECTS ARE FIRST CLASS CITIZENS

PROCESS IS DESCRIBED IN TERMS OF ARTIFACTS

SMALLER **PARTITION** OF THE PROCESS



ONLY **FEW ADJUSTMENTS** TO BPMN REQUIRED

EXTENSION HAS **FORMAL SEMANTICS**

STEP TOWARDS **CORRECTNESS BY DESIGN**



ARTIFACT-CENTRIC MODELING USING BPMN

niels.lohmann@uni-rostock.de
<http://about.me/nlohmann>

Niels Lohmann
Martin Nyolt

Universität
Rostock



Traditio et Innovatio